



Indiabulls

ESTATE & CLUB

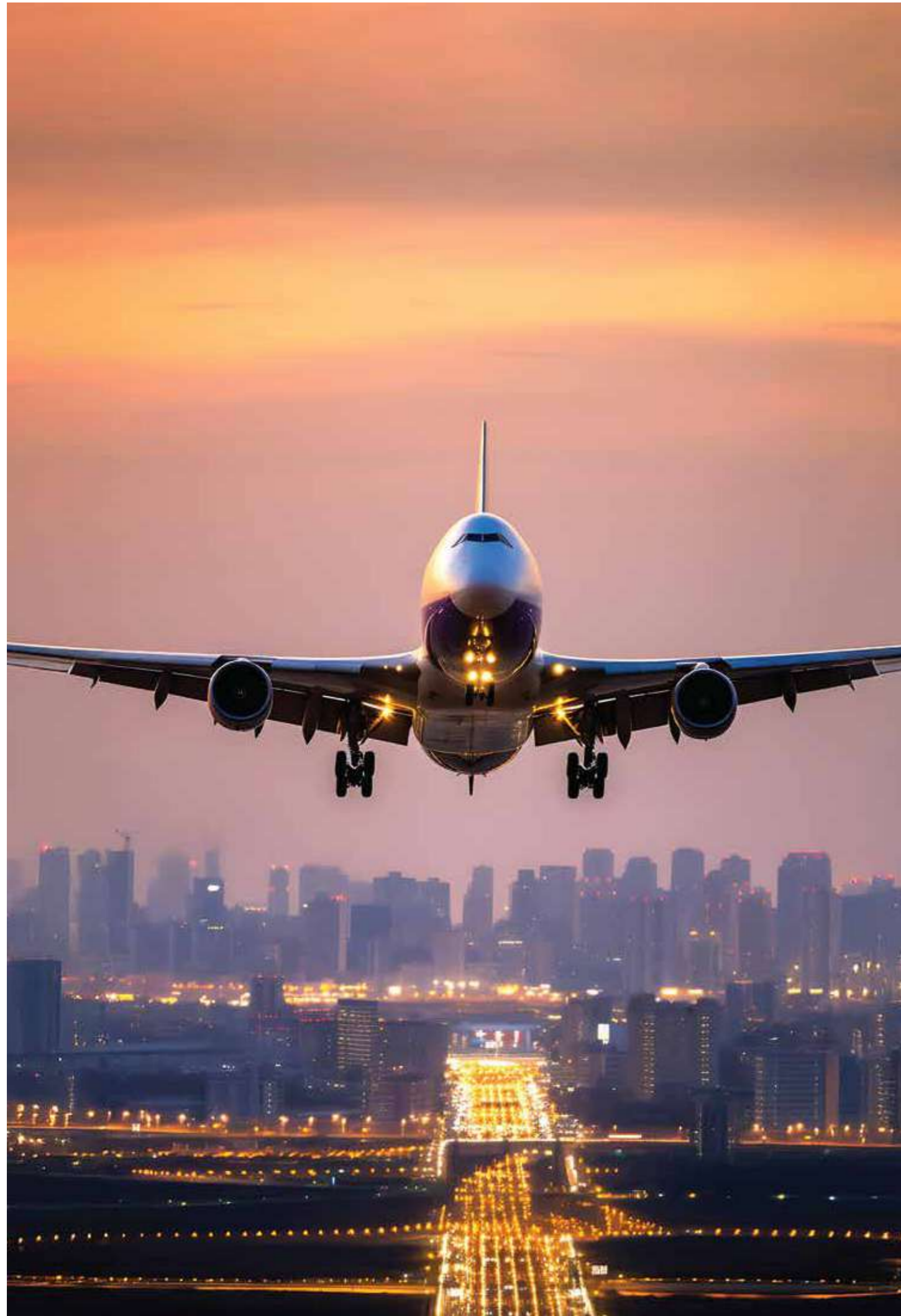
Indiabulls Estate & Club

Indiabulls Estate & Club offers you a rare opportunity to enjoy the pleasures of resort-style living, forever. Located on Dwarka Expressway, it is spread across nearly 17 acres of prime land, of which over 7 acres are landscaped greens. This elite one-of-a-kind gated community offers the lifestyle coveted by everyone but enjoyed by a select few.

Residents enjoy amenities like Waves, the iconic clubhouse that spans over 2 acres, Café Flora, the place to indulge your tastebuds, sports facilities that include everything from pickleball courts to a football field, indoor as well as outdoor gym areas, an adventure park for kids, to name just a few.

Add to this, services like round-the-clock concierge, a luxurious spa, valet parking, multi-tier security and you'll get a sense of the vacation-like feeling that awaits.





The
Heart *of new*
Gurgaon



The Place to Be

Located right on Dwarka Expressway, Indiabulls Estate & Club gives you the advantage of being close to both Gurgaon, as well as Delhi. It gives you quick access to major hubs like Cyber City, Aerocity, Diplomatic Enclave, Dwarka Golf Course, as well as the international airport. From the most sought after schools to shopping malls and hospitals, nothing will seem too far.

HOTELS

- 01. VIVANTA BY TAJ 10 MINUTES
- 02. JW MARRIOTT 15 MINUTES
- 03. RADISSON BLU 15 MINUTES

MALLS

- 04. CONSCIENT ONE 3 MINUTES
- 05. WORLDMARK 15 MINUTES

SCHOOLS

- 06. DELHI PUBLIC SCHOOL 3 MINUTES
- 07. HSV INTERNATIONAL SCHOOL 1 MINUTE

HOSPITALS

- 08. MAX HOSPITAL 10 MINUTES
- 09. PARK HOSPITAL 15 MINUTES
- 10. MANIPAL HOSPITAL 15 MINUTES

METRO STATION

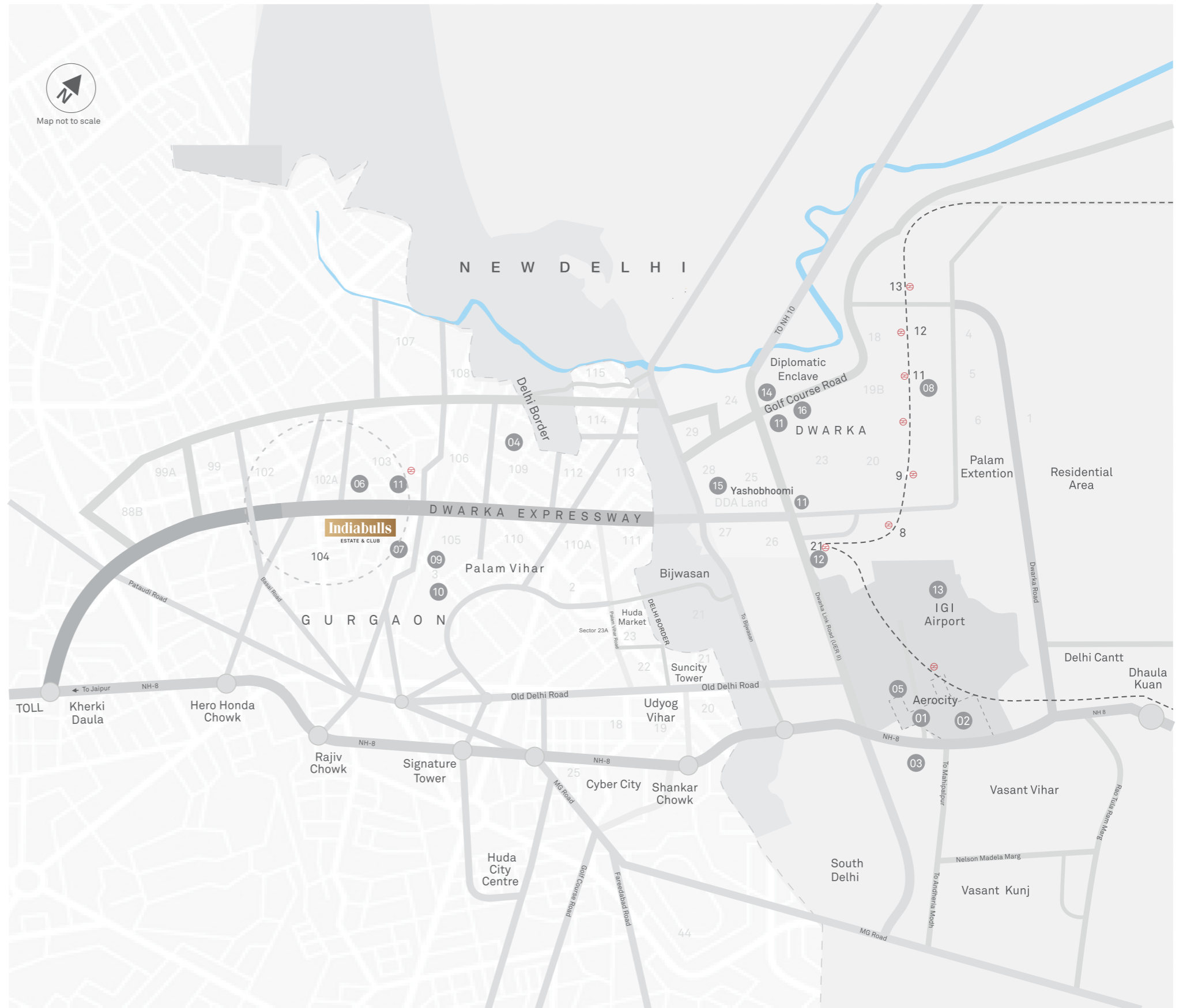
- 11. YASHOBHOOMI 5 MINUTES
- 12. SECTOR 21, DWARKA 10 MINUTES

AIRPORT

- 13. IGI AIRPORT 15 MINUTES

OTHER LANDMARKS

- 14. DIPLOMATIC ENCLAVE 5 MINUTES
- 15. YASHOBHOOMI 5 MINUTES
- 16. DWARKA GOLF COURSE 10 MINUTES





A living room that exudes class and is sure to make a great impression on everyone.



Beautifully crafted contemporary kitchen, where sleek design and modern functionality make cooking a delight.



Exquisitely designed bedrooms that offer ample room to relax, unwind and rejuvenate in style.



Step onto your expansive balcony and immerse yourself in breathtaking views of endless lush greenery.

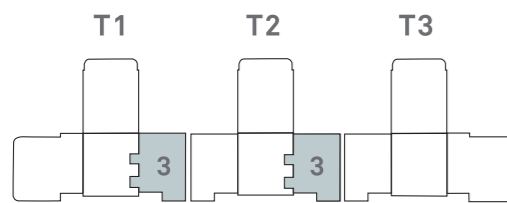
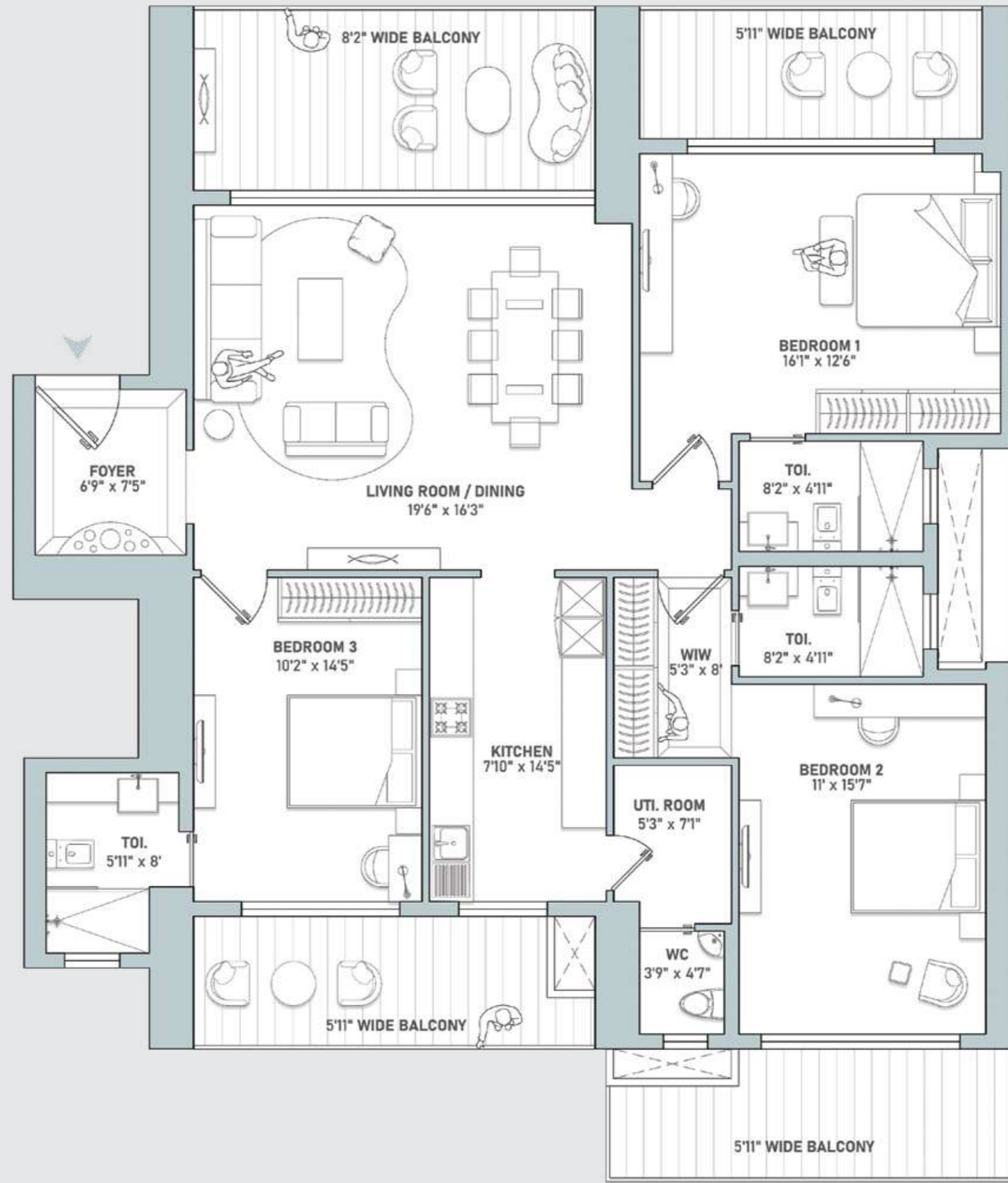
Aurum

THREE-BEDROOM APARTMENT

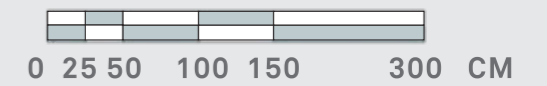
RERA CARPET
1328-1330 SQFT

BALCONY AREA
432 SQFT

SUPER AREA
2464-2467 SQFT



KEY PLAN



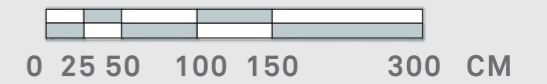
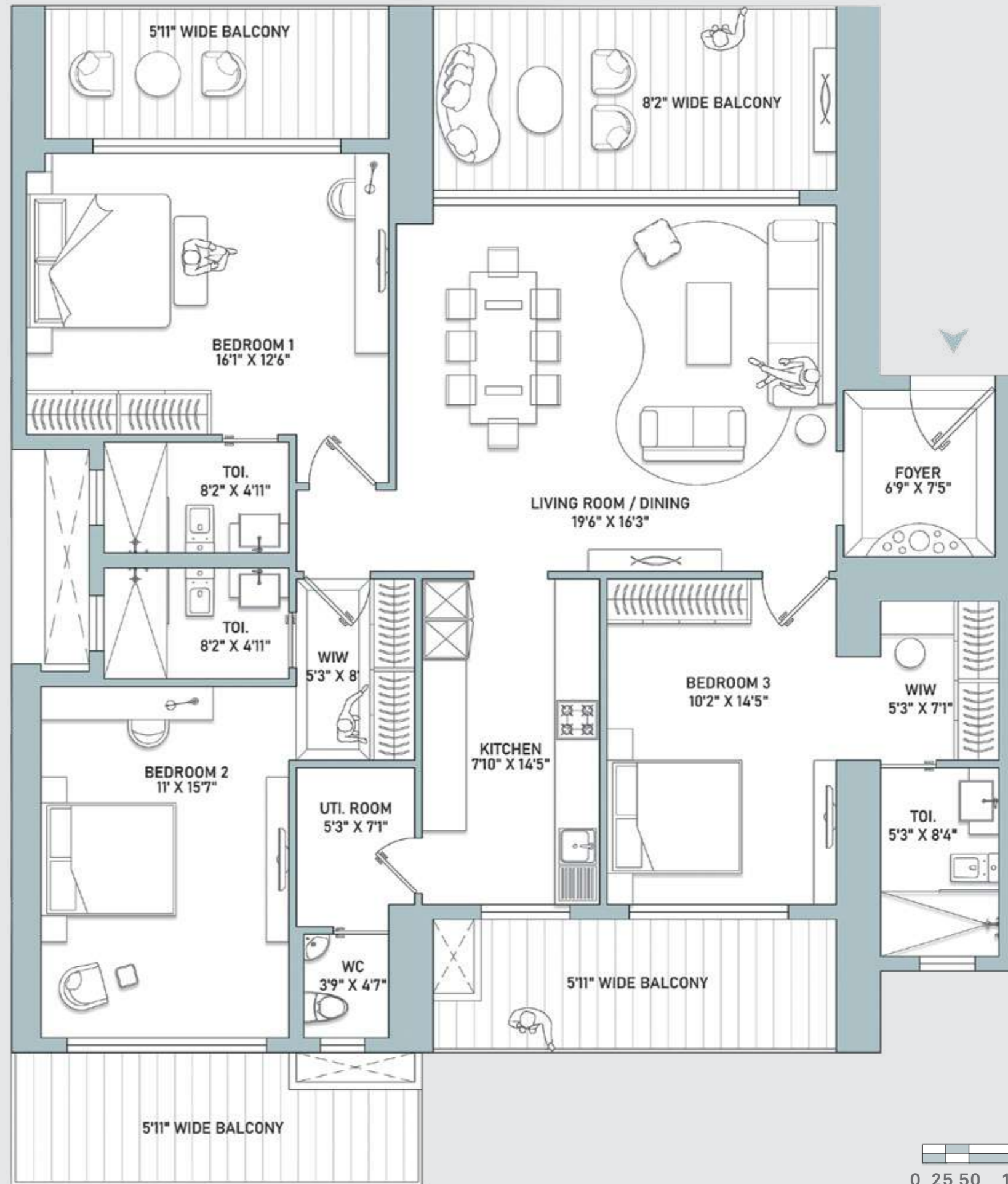
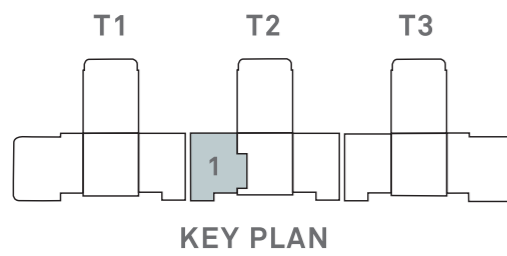
Vantage

THREE-BEDROOM APARTMENT

RERA CARPET
1404-1405 SQFT

BALCONY AREA
432 SQFT

SUPER AREA
2570-2572 SQFT



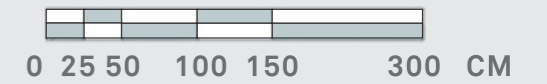
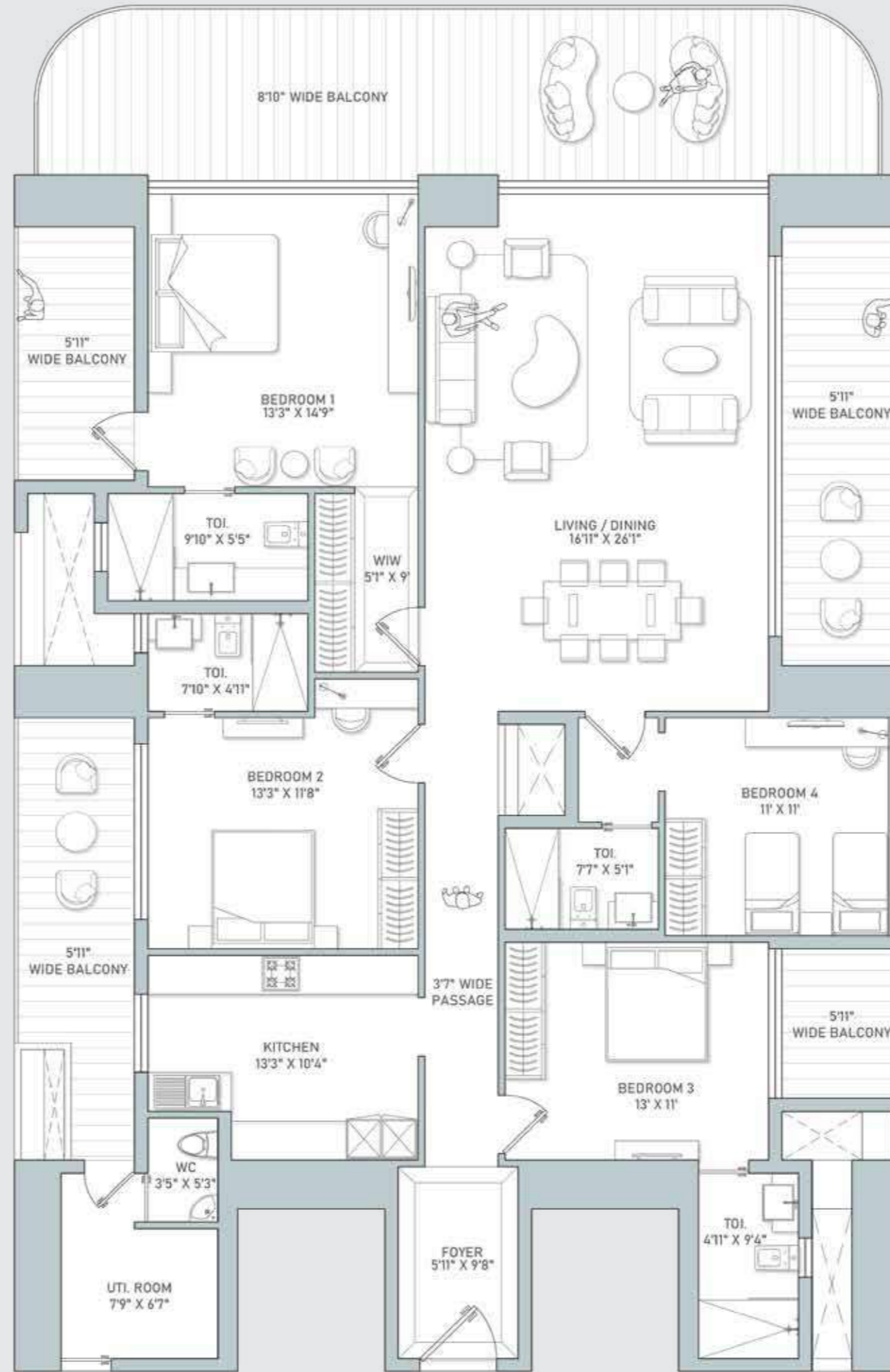
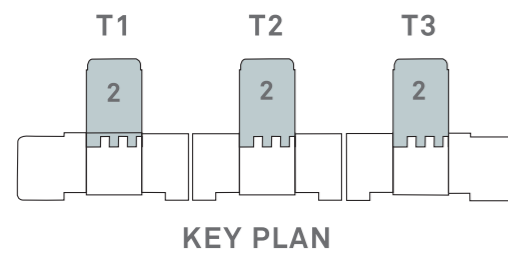
Arc

FOUR-BEDROOM APARTMENT

RERA CARPET
1780-1788 SQFT

BALCONY AREA
722 SQFT

SUPER AREA
3503-3514 SQFT



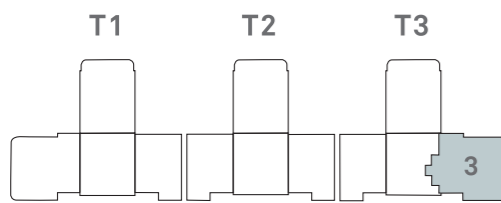
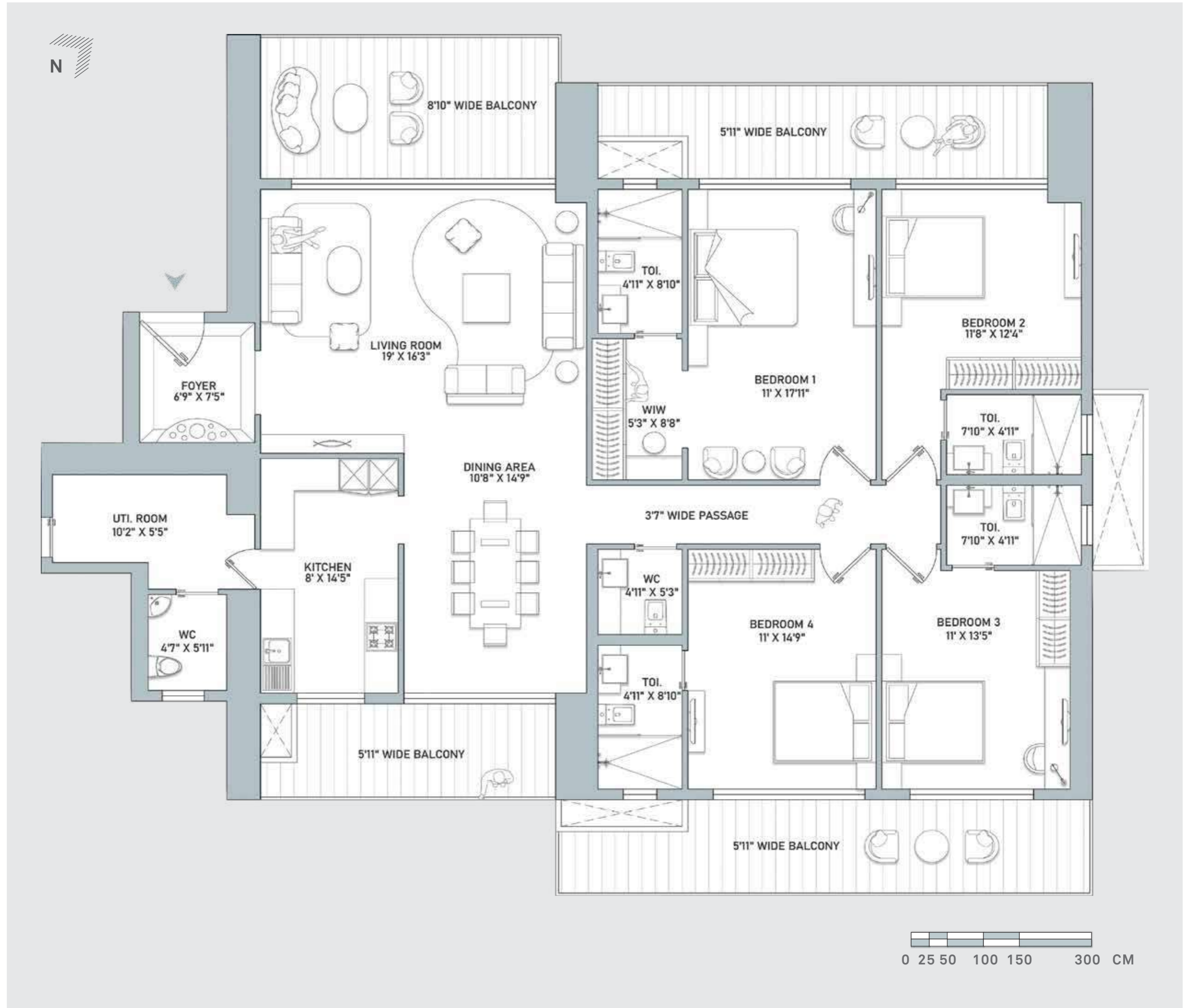
Apex

FOUR-BEDROOM APARTMENT

RERA CARPET
1869 SQFT

BALCONY AREA
559 SQFT

SUPER AREA
3399 SQFT



KEY PLAN

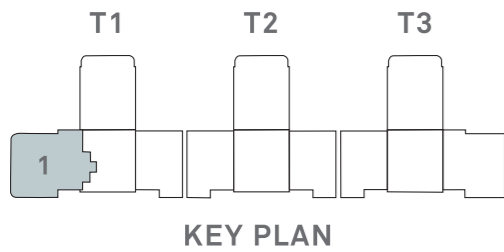
Crest

FOUR-BEDROOM APARTMENT

RERA CARPET
1876 SQFT

BALCONY AREA
809 SQFT

SUPER AREA
3759 SQFT



Specifications

1. LIVING / DINING / FOYER / FAMILY LOUNGE

1.1	Floor	Imported Marble / Engineered Stone or Equivalent
1.2	Walls	Premium Grade Acrylic Emulsion Paint on POP Punning / Gypsum Plaster
1.3	Ceiling	Premium Grade Acrylic Emulsion Paint with POP Punning / Gypsum Plaster

2. MASTER BEDROOM / DRESSING ROOM

2.1	Floor	Imported Marble / Engineered Stone or Equivalent
2.2	Walls	Premium Grade Acrylic Emulsion Paint on POP Punning / Gypsum Plaster
2.3	Ceiling	Premium Grade Acrylic Emulsion Paint with Gypsum Plaster

3. MASTER TOILET

3.1	Floor	Imported Marble / Engineered Stone or Equivalent
3.2	Walls	Combination of Stone / Tiles & Acrylic Emulsion Paint
3.3	Ceiling	Acrylic Emulsion Paint or Equivalent
3.4	Counters	Imported Marble / Granite / Engineered Stone or Equivalent
3.5	Sanitary Ware / CP Fittings	Luxury Brand Fittings
3.6	Fitting / Fixtures	Shower Partition, Mirror, Geysar

4. BEDROOMS

4.1	Floor	Imported Marble / Engineered Stone or Equivalent
4.2	Walls	Premium Grade Acrylic Emulsion Paint on POP Punning / Gypsum Plaster
4.3	Ceiling	Premium Grade Acrylic Emulsion Paint with Gypsum Plaster

5. TOILET

5.1	Floor	Imported Marble / Engineered Stone/Premium Anti-Skid Vitrified Tiles or Equivalent
5.2	Walls	Combination of Stone / Tiles & Acrylic Emulsion Paint
5.3	Ceiling	Acrylic Emulsion Paint or Equivalent
5.4	Counters	Imported Marble / Granite / Engineered Stone or Equivalent
5.5	Sanitary Ware / CP Fittings	Luxury Brand Fittings
5.6	Fixtures	Shower Partition, Mirror, Geysar

6. KITCHEN

6.1	Floor	Imported Marble / Engineered Stone or Equivalent
6.2	Walls	Combination of Premium Vitrified Tiles & Acrylic Emulsion
6.3	Ceiling	Acrylic Emulsion Paint with Gypsum Plaster
6.4	Counters	Granite / Engineered Stone Counter Top or Equivalent / Vitrified Tiles Above Counter
6.5	Fixtures	Premium Grade Modular Kitchen
6.6	Kitchen Appliances	Refrigerator, Microwave Oven, Dishwasher, HOB & Chimney, RO, Sink Double-Bowl, Faucet

Specifications

SPECIFICATION OF APARTMENTS AND OTHER BUILDINGS INCLUDING THE FOLLOWING:

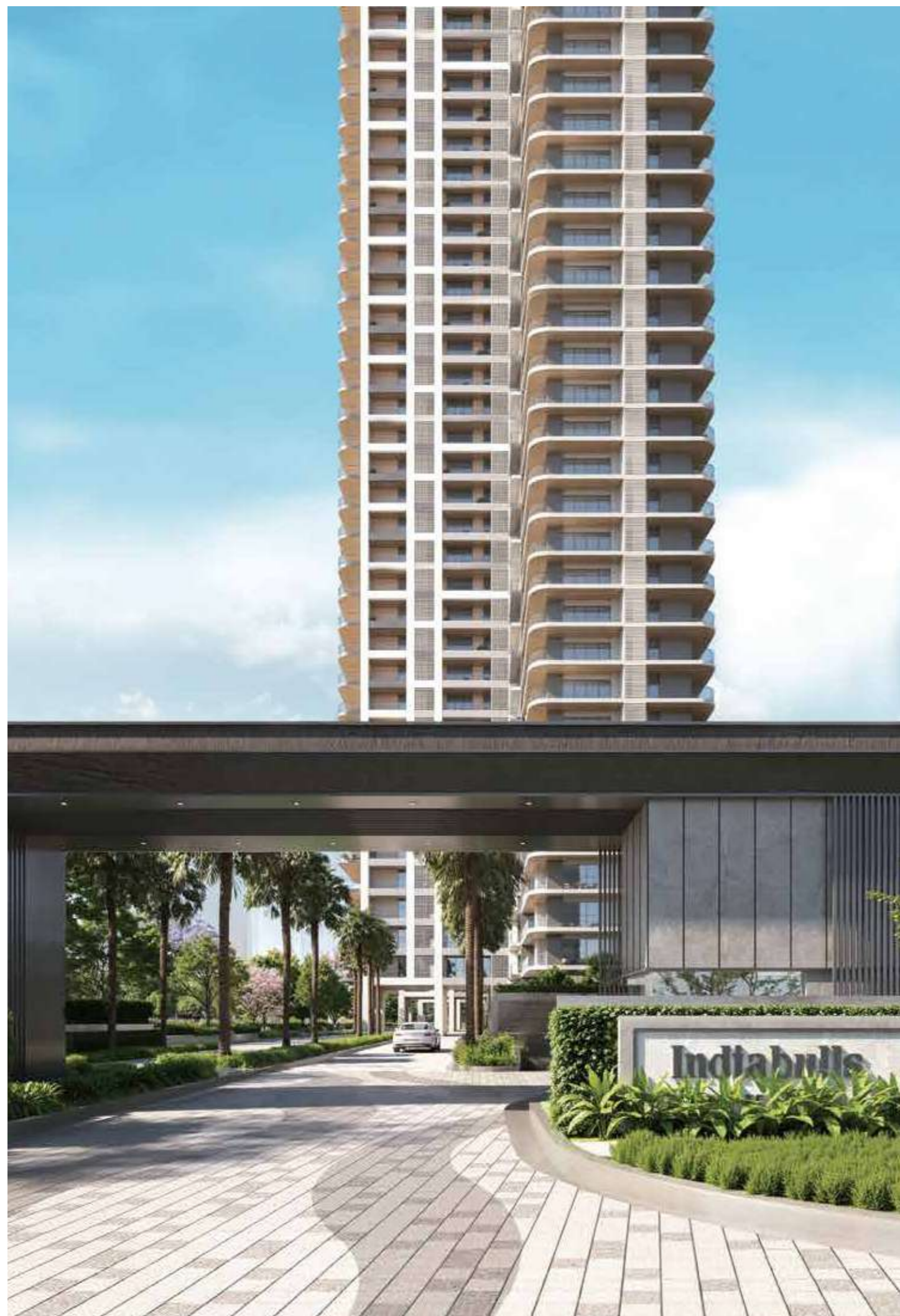
1.	Lift Details	5 Lifts in Each Tower (4 Passenger and 1 Service)
2.	Windows / Glazings	Powder Coated Aluminium / UPVC Frames with Glass
3.	Doors	
3.1	Main Door	Hard Wood Frame & Veneered Flush / Panelled Door
3.2	Internal Doors	Laminate Finish Flush Doors / Moulded Shutter Painted with Wooden Frame
4.	Air Conditioning	VRV Hot and Cold in Apartment
5.	Provision of Wi-Fi and Broadband Facility	Yes
6.	EV Charging	Yes

7. UTILITY ROOMS / UTILITY BALCONY / TOILET

7.1	Floor	Vitrified Tiles or Equivalent
7.2	Walls & Ceiling	Acrylic Emulsion Paint or Equivalent
7.3	Toilet	Anti-Skid Vitrified Tiles or Equivalent
7.4	Balcony	Vitrified Tiles or Equivalent

8. SIT-OUTS

8.1	Floor	Anti-Skid Vitrified Tiles or Equivalent
8.2	Walls & Ceiling	Acrylic Emulsion Paint or Equivalent
8.3	Railings	Combination of Stainless Steel / Aluminium and Glass



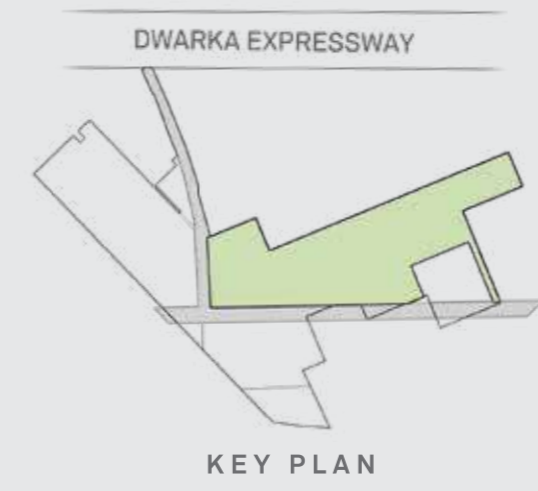
The
Luxuries
of estate
Living



Master Plan

Legend

- | | |
|-----------------------------|------------------------|
| 1. Access Road | 10. Outdoor Café |
| 2. Green Vista Driveway | 11. Linear Garden |
| 3. Entry Gateway | 12. Outdoor Pool |
| 4. Football Field | 13. Leisure/ Kids Pool |
| 5. Butterfly Garden | 14. Outdoor Gym |
| 6. Café Roof Lawn | 15. Kids Play Area |
| 7. Family Lawn | 16. Cricket Pitch |
| 8. Wellness Pavilion Garden | 17. Lobby Garden |
| 9. Clubhouse Event Lawn | |



Clubhouse

Floor 1

Pickleball Court
Padel Court

Ground Floor

Swimming Pool

Floor 1

Badminton Court

Ground Floor

Squash Court
Padel Court

Ground Floor

Locker Room
Indoor Pool

Roof

Tennis Court

Floor 1 & 2

Gym

Ground Floor

Cafe & Banquet



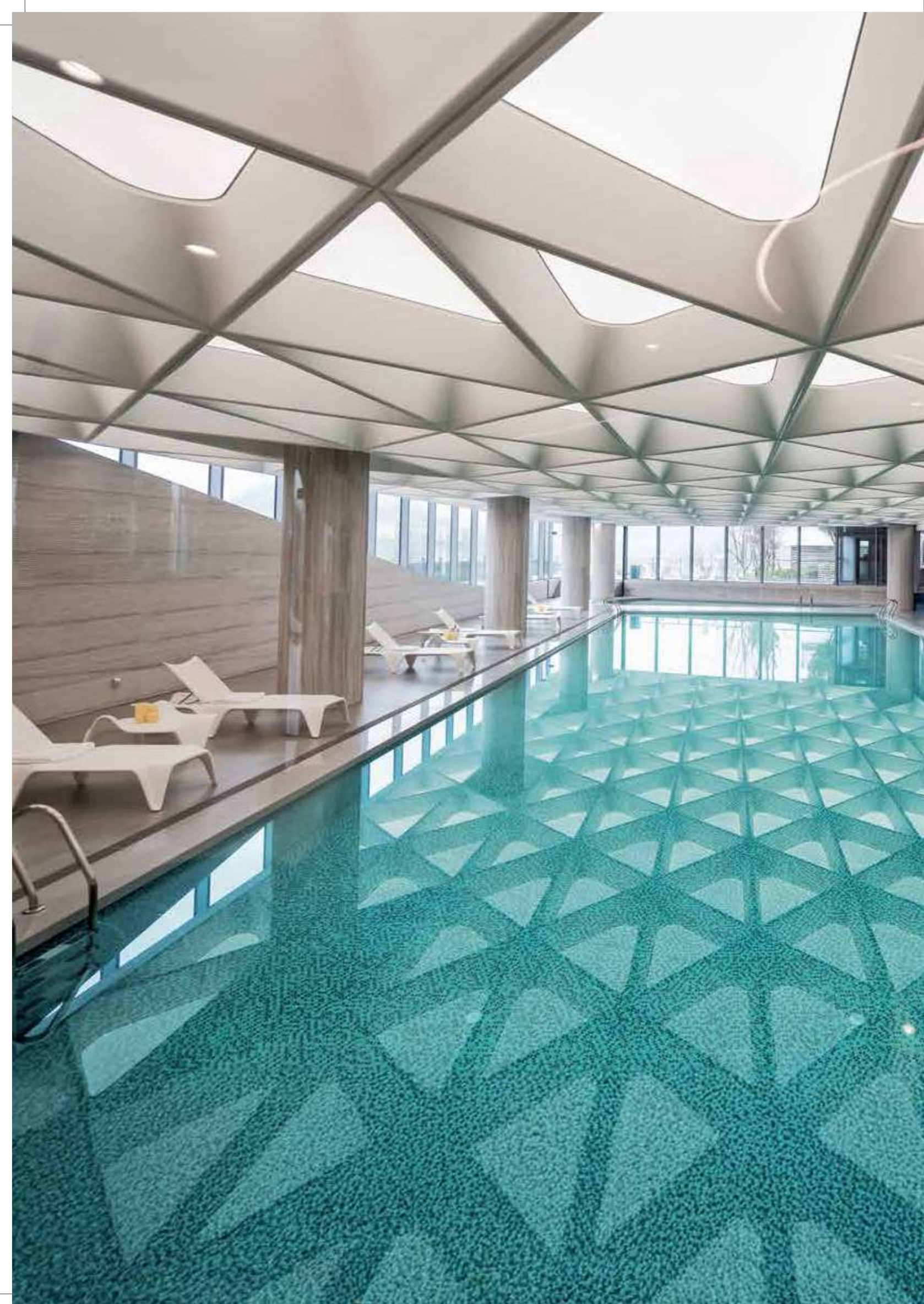


Resort *style* Clubhouse



Waves
The Clubhouse





Enjoy the Vacation Vibe

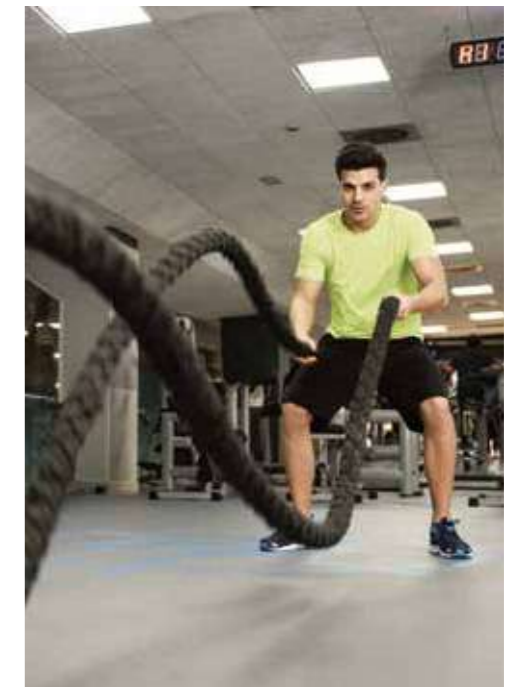


Stop waiting for a vacation to enjoy resort-style luxuries. Waves, the clubhouse at Indiabulls Estate & Club has everything you could wish for and more.

Soak in the sun and sip a refreshing drink at the deck of the outdoor pool. Or, go for a swim in the temperature controlled, all-weather, indoor swimming pool. Pamper yourself with a luxurious spa experience, or raise the excitement level with a round of pool with friends. You will never run out of options to celebrate life.



Iconic *fitness* Centre





Health First Lifestyle



A haven for fitness enthusiasts, Indiabulls Estate & Club delights not just by scale, but the diversity of fitness and sports facilities it offers.

An expansive state-of-the-art indoor gym, an outdoor gym, pickleball courts, padel courts, tennis courts, badminton courts, cricket pitches, a football field, the list of options to vary your fitness regime and keep it exciting goes on and on.



Endless *verdant* Vista





Picturesque Greens



Living at Indiabulls Estate & Club is a chance to escape the madness of the city and reconnect with nature. A chance to enjoy the tranquillity of acres and acres of pristine greens.

Unwind with a book in one of the many reading pods that dot the landscaped greens. Cultivate inner peace at the yoga park. Jog along winding tracks that pass through thickets of trees and flowered gardens. There is also an adventure park to ensure your kids love to spend time outdoors. And a pet park to ensure your furry friends feel right at home.



Your Own Café



Nestled amid pristine green surroundings, Café Flora offers residents a tranquil retreat. With expansive views of landscaped gardens on one side and the football field on the other, it provides the perfect ambience to unwind.

Sip on a freshly brewed coffee, enjoy a gourmet pastry, savour a light meal, or just relax and take a small break. Café Flora has everything to become your favourite spot for socialising and relaxation.



Complete Peace of Mind



The resort-style charm of Indiabulls Estate & Club would hardly be complete without the array of services it has to offer its privileged residents. You enjoy the benefit of a concierge desk that works round the clock to cater to your every need. 24-hour valet services to make life easy. And sophisticated multi-layer security for complete peace of mind.

Indiabulls' team of dedicated staff is always at hand to ensure you don't have to worry about a thing.

INDIABULLS ESTATE & CLUB

Site Address: Sector-104, Dwarka Expressway, Gurugram

HRERA Reg. No. RC/REP/HARERA/GGM/897/629/2024/124

Dated: 26.12.2024 | www.haryanarera.gov.in

Disclaimer: All images and graphical depictions are purely artistic in nature and may not represent the actual final product. The floor plans are Illustrative / Tentative / Indicative only and subject to change at any time in future as per requirement of Company/ Competent Authority without any prior notice.



Indiabulls

ESTATE & CLUB