



# HORIZON FLOORS

— BY GULIANI GROUP —

ANANDAM ORA-SECTOR 93, GURGAON

# ABOUT US

With over three decades of excellence in the real-estate industry, we have established ourselves as a trusted name in Gurgaon's evolving skyline. Our legacy is built on a foundation of innovation, quality, and commitment, having successfully delivered over 200 projects spanning residential, commercial, and mixed-use developments.

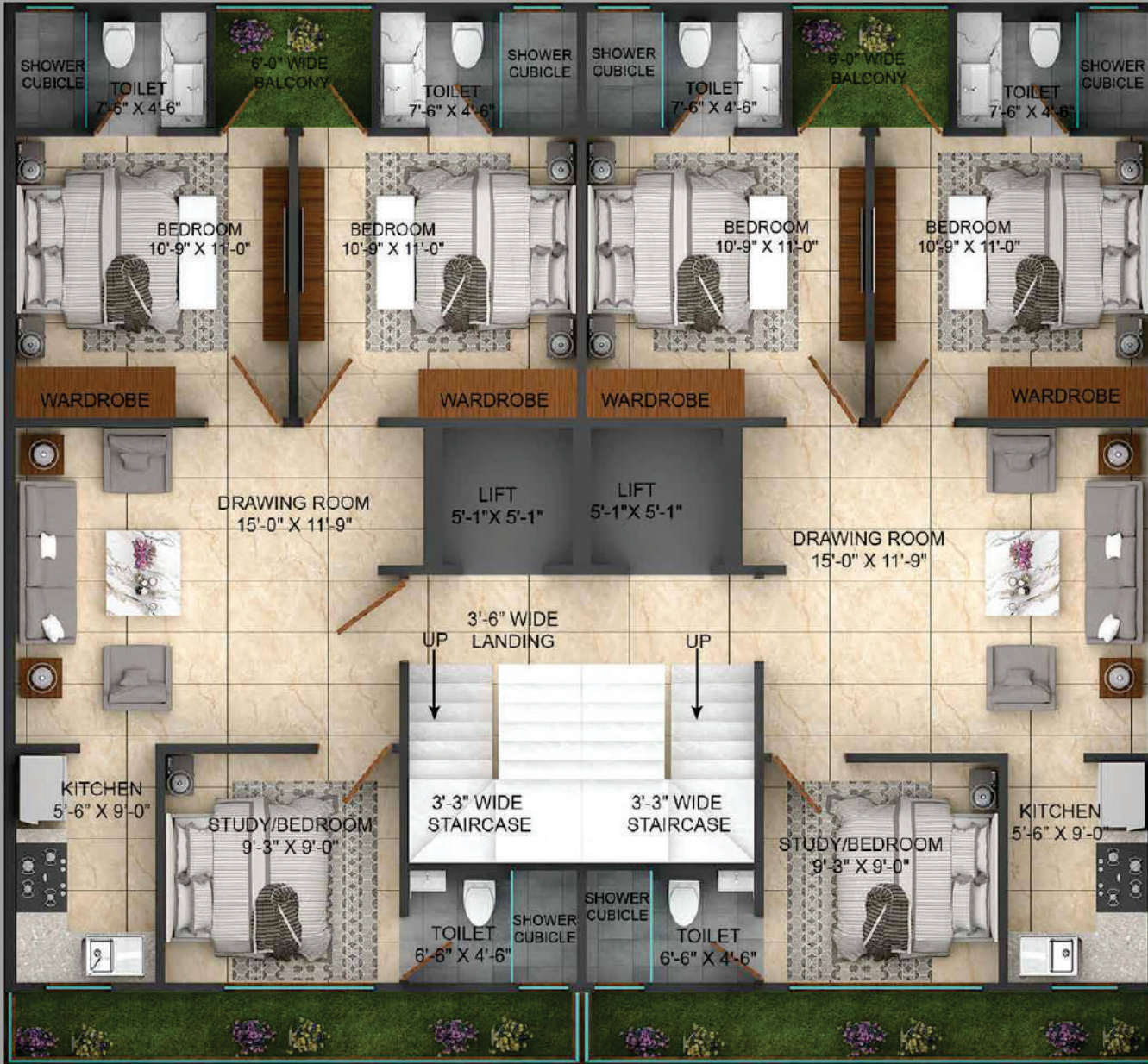
Every project we undertake is a testament to our dedication to craftsmanship, thoughtful design, and customer satisfaction.

We don't just build spaces; we create landmarks that redefine urban living and investment opportunities. Driven by a vision for the future, we continue to shape premier properties that offer an unmatched blend of luxury, functionality, and sustainability, and long-term value in every square foot.

Join us as we build the future—one landmark at a time.

# Elevation





# Layout Type 1



# Parking Plan 1



# Layout Type 2



# Parking Planz

## → LIVING / DINING

- Floor- Premium Vitrified Tiles
- Walls- Acrylic Emulsion Paint / OBD
- Ceiling- Acrylic Emulsion / OBD

## → DOORS

- Internal Doors- Laminate cladded Flush Door
- Entrance Doors- Laminate Flush Door; Door frames and
- Architrave- Laminate; Door Hardware in SS Matt finish (Dorset, Harrison or Equivalent);
- Electronic lock on main door (Dorset, O'Zone or Equivalent).

## → EXTERNAL GLAZINGS

- External Doors and Windows- UPVC Profile (with Pleated mesh) with
- 6mm toughened Glass.

## → ELECTRICAL FIXTURES/ FITTING

- PVC Conduits (Astral/Polypack); Wiring (KEI/Polycab/Anchor)
- MCB (Hager or Equivalent); Modular Socket & Switches (Havells /Anchor or equivalent);
- Ceiling fans in All Rooms and Lobby,
- Exhaust fans in all Bathrooms (Havells Standard/Anchor or equivalent);
- LED Lighting in Coves and Downlighters; Designer Chandelier in Drawing room;
- 25L Geysers in all Bathrooms and 3L Geyser in Kitchen (Havells Standard/ Racold or equivalent). Provision of Refrigerator & Washing Machine (in balcony).
- 4 nos. Split AC of adequate capacity of reputed brand. Providing DG for power backup. Electric Car Charging Point for each floor. Wi-Fi Provision at each floor & terrace.

## → BEDROOMS

- Floor- Laminated Wooden Flooring/Vitrified Tiles
- Walls- Acrylic Emulsion Paint/ OBD
- Ceiling- Acrylic Emulsion Paint/ OBD

## → WASHROOMS

- Walls- Combination of Tiles
- Floors- Anti-skid Tiles
- Ceiling- Grid Ceiling
- Counter- Granite/ Synthetic Stone
- Fixtures / Accessories- Mirrors over Vanities of Washrooms,
- Glass Partition in Shower area, Wall-hung WC, Exhaust Fan, Geysers.

## → BALCONY

- Floor- Vitrified Tiles (16\*16)
- Ceiling- OBD

## → KITCHEN

- Modular Kitchen with imported stainless steel sink fittings;
- Granite/Synthetic Stone Counter top
- Appliances- Hob and Chimney (KAFF, Glen, or Equivalent).

## → POWER BACK-UP

- 4KV per flat\*

## → STAIRCASES

- Floor- Granite

## → NOTES

- Zone IV seismic considerations for structural design.

## → CONVERSION SCALE

- 1 ft = 304.8 mm

### DISCLAIMER

- Marble/Granite being natural material has inherent characteristics of colour and grain variations.
- Air conditioning shall not be provided in servant room.
- Specifications are indicative and are subject to change as decided by the Promoter in accordance with applicable law.
- Marginal variations may be necessary during construction. The extent/number/variety of the equipment/appliances and their make/brand thereof are tentative and liable to change at sole discretion of the Promoter in accordance with applicable law.
- Additional Charges Applicable

# Specifications

# LOCATION



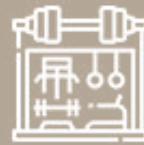
# Facilities



**Modular Kitchen  
& Wardrobe**



**AC's in all  
Rooms**



**Gymnasium**



**Vastu  
Compliant**



**Security System**



**Gated Colony**



**Amphitheatre**



**Badminton  
Courts**



**Skating Rink**



**Grocery store**

# SURROUNDINGS



## HOSPITALS

IPSAA DAY CARE AND PRE SCHOOL	0.5KM
GREENWAY HOSPITAL	0.5KM
SILVER STREAK HOSPITAL	1.0KM
AARVY HEALTHCARE	2.0KM
ARC MULTI SPECIALITY HOSPITAL	2.5KM
GENESIS HOSPITAL	2.5KM
MIRACLES APOLLO CRADLE / SPECTRA HOSPITAL	2.5KM
ROCKLAND HOSPITAL	5.0KM
MEDEOR HOSPITAL, MANESAR	7.0KM
ESIC HOSPITAL, MANESAR	7.5KM
MEDANTA MEDICITY	9.5KM

## RETAIL & LIFESTYLE SPACES

SAPPHIRE 92	2.5KM
IRIS BROADWAY	3.0KM
SAPPHIRE 90	3.5KM
SS OMNIA	3.5KM
GARDENCITY ARCADE	4.0KM
GARDENCITY CENTRAL	4.5KM
SAPPHIRE 83	5.0KM
TOWN SQUARE	6.0KM
VATIKA CITY CENTRE	8.5KM
DLF CYBER HUB	9.5KM

## SCHOOL & DAY CARE CENTRE

IPSAA DAY CARE AND PRE SCHOOL	0.5KM
RPS INTERNATIONAL	3.0KM
ST. XAVIER'S	5.0KM
DPS	6.5KM
MATRIKIRAN SCHOOL	8.0KM
BAL BHARTI SCHOOL	8.5KM

## HOTELS

RADISSON HOTEL	5.5KM
HOLIDAY INN	5.5KM
ITC GRAND BHARAT	8.5KM
HYATT REGENCY	9.0KM

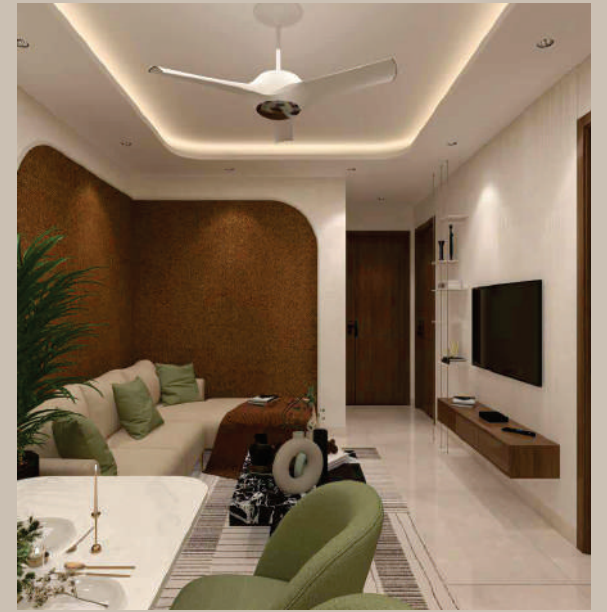
## UNIVERSITY

GURUGRAM UNIVERSITY	7.0KM
---------------------	-------

All distances shown are approximations only.



Artistic Rendition



Artistic  
Rendition





# HORIZON FLOORS

— BY GULIANI GROUP —

ANANDAM ORA-SECTOR 93,GURGAON

Corporate office

602-603, Suncity Business Tower, Sector 54, Gurugram 122001

Site Location

