

GANGA Valley Floors

Your retreat in the city,
embraced by
the Aravalis.

GANGA
REALTY

Ganga Global Homes Private Limited

Ground Floor, Tower A, Sector 54, Vatika Tower, Golf Course Road, Gurugram, Haryana 122003

AN ISO 45001:2018 ; 9001:2015 ; 14001:2015 CERTIFIED COMPANY

Disclaimer: The Real Estate (Regulation and Development) Act 2016 and the rules made there under have brought significant changes to the real estate sector. The Promoter/Developer is fully committed to be compliant with the provisions laid down under RERA. Promoter/Developer urges every applicant to inspect the site where the project is proposed to be constructed and shall not merely rely upon or to be influenced by any architectural impression, plan or sales brochure and therefore requested to make personal judgment prior to submitting an application for booking. The images shown here are indicative of design and for illustration purpose only further the actual design may vary in fit and finish from the one displayed above, project details/specification can also be accessed at the office of Haryana Real Estate Regulatory Authority website <http://hrera.in>, T&C apply. 1 sq.mt.=10.7639 sq.ft.



REFERENCE IMAGE



Wake up
where the
hills greet
you first.





REFERENCE IMAGE

Each day
begins with the
calm of the
Aravali hills.



Step into a world
where every
moment is
cherished.

REFERENCE IMAGE



GANGA Valley

Floors

Premium Floors Crafted for
Premium Living

Ganga Valley Floors offers spacious 3 BHK residences with exclusive office spaces in the basement and north-facing units. Comfort, privacy, and thoughtful design come together to give you more than just a home, a lifestyle to call your own.

ARTISTIC IMPRESSION



GANGA
Valley



Perfectly
Connected.
Naturally
Surrounded.

At Sector 78, Gurugram, life at Ganga Valley Floors strikes a rare balance of being deeply connected yet tucked away in calm surroundings. With Dwarka Expressway, NH 48, Cyber Hub, and IGI Airport just minutes away, your retreat in the city never feels out of reach.





-  **5 Minutes** from Dwarka Expressway
-  **5 Minutes** from Cyber City 2
-  **3 Minutes** from NH48
-  **10 Minutes** from Rajeev Chowk
-  **20 Minutes** from Cyber Hub
-  **25 Minutes** from IGI Airport



ARTISTIC IMPRESSION



REFERENCE IMAGE

Private Basement

Your Space, Your Way.

An exclusive private basement to create your dream office. Designed for privacy and flexibility, it's your space to make entirely your own.





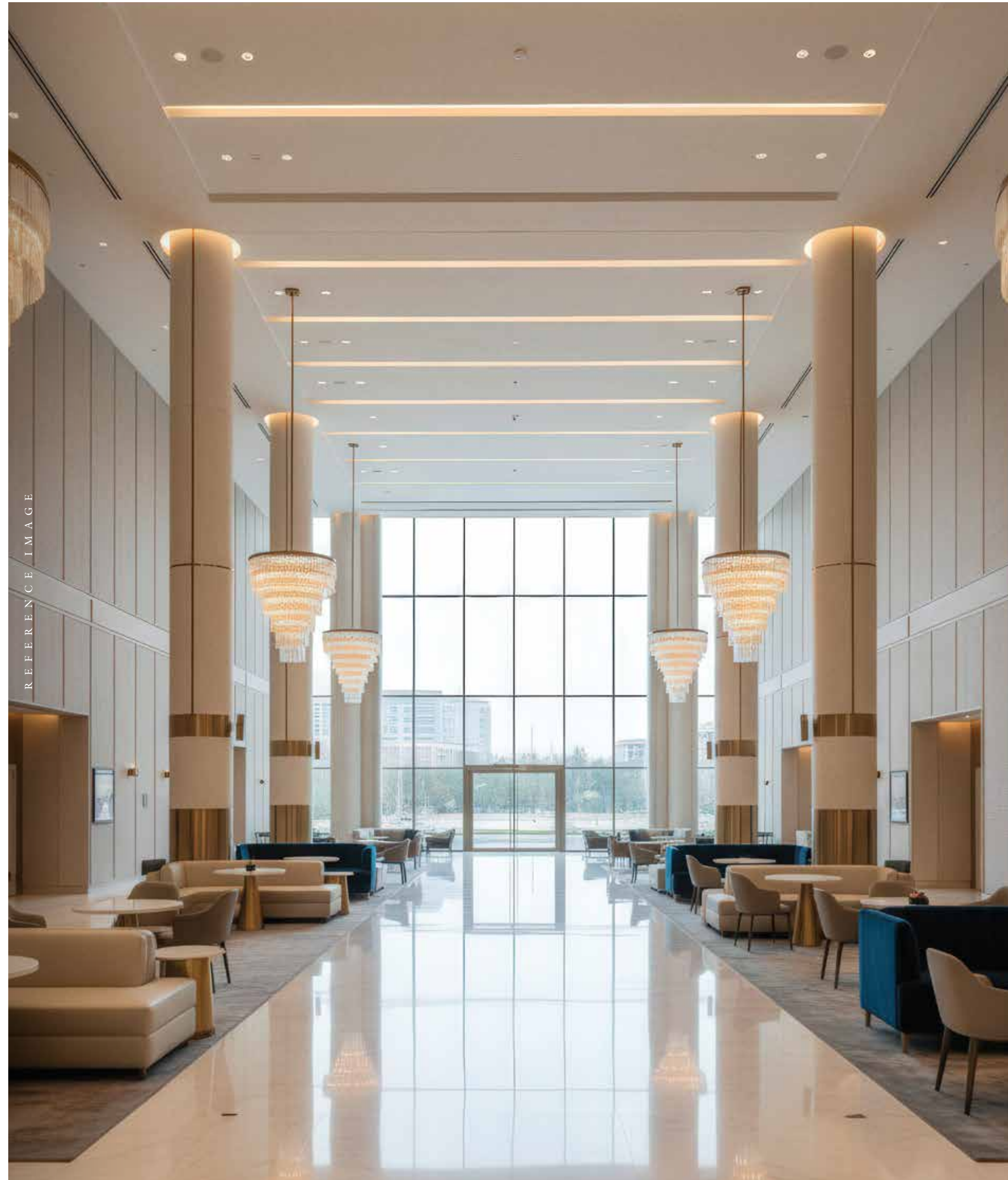
REFERENCE IMAGE

Safety and Security

Confidence begins with certainty.

A secure environment protects what matters and
lets you live without hesitation.





REFERENCE IMAGE

Multipurpose Community Centre

The Heart of Belonging.

Stylish, spacious, and designed for togetherness, a space for engagement, wellness, and celebration, all under one roof.





REFERENCE IMAGE

Jogging Track

Wellness Begins at Your Doorstep.

Scenic, shaded, and refreshing, every step on the track is a step closer to healthier living.





Green Spaces

Fresh Air, Fresh Perspectives.

Lush, open greens aren't just around your home;
they're woven into your lifestyle.





REFERENCE IMAGE

Stilt Parking

Hassle-Free. Home-Ready.

Well-planned stilt parking gives your vehicle safety
and you direct access to your home with ease.





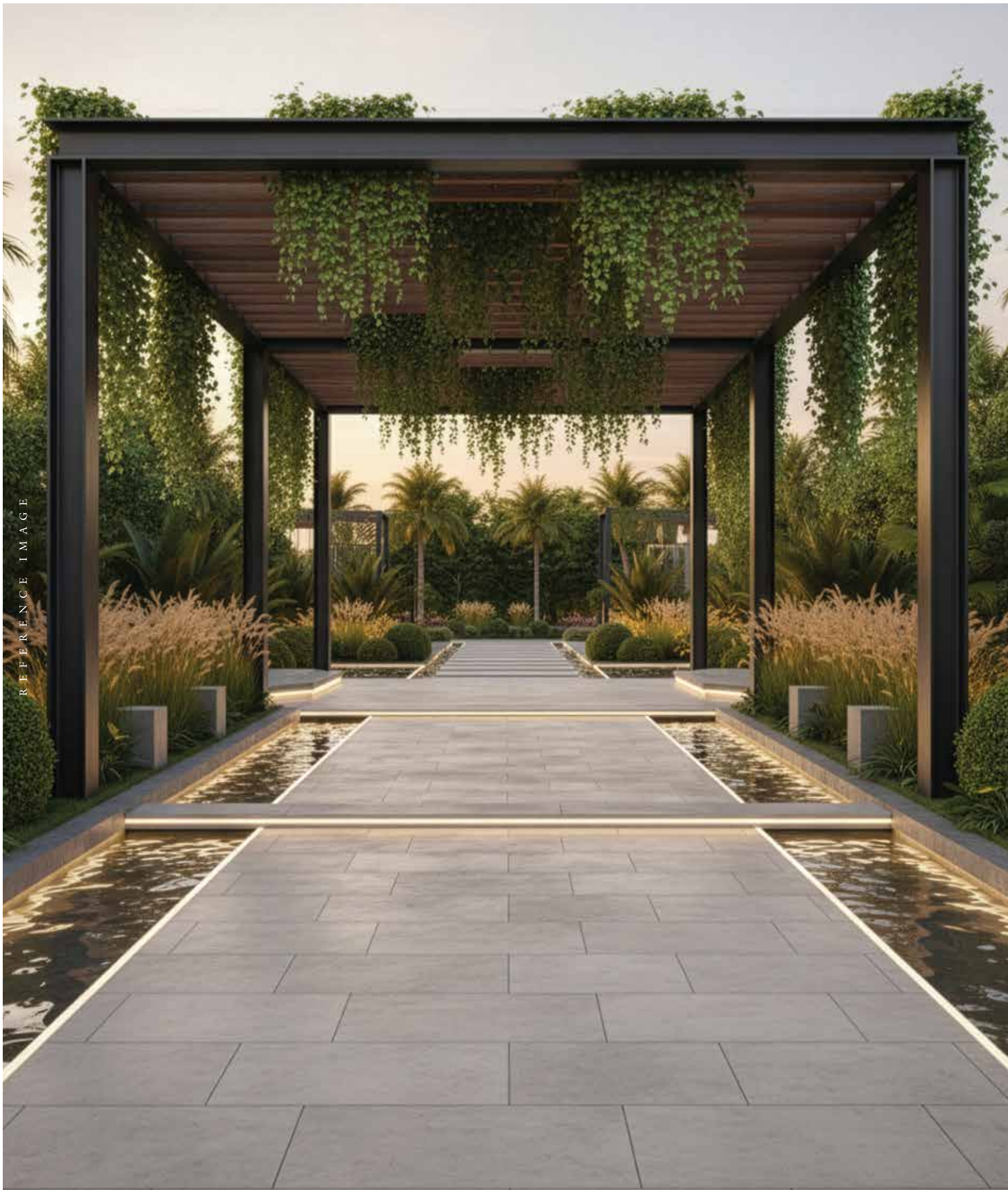
REFERENCE IMAGE

Lifestyle and Leisure

Fresh energy, fresh escapes.

From lush outdoor play to refined neighbourhood leisure,
every day opens up a new way to unwind.





REFERENCE IMAGE

Landscape and Infrastructure

Every detail is built to elevate daily living.

Nature softens the spaces, smart design
strengthens them.





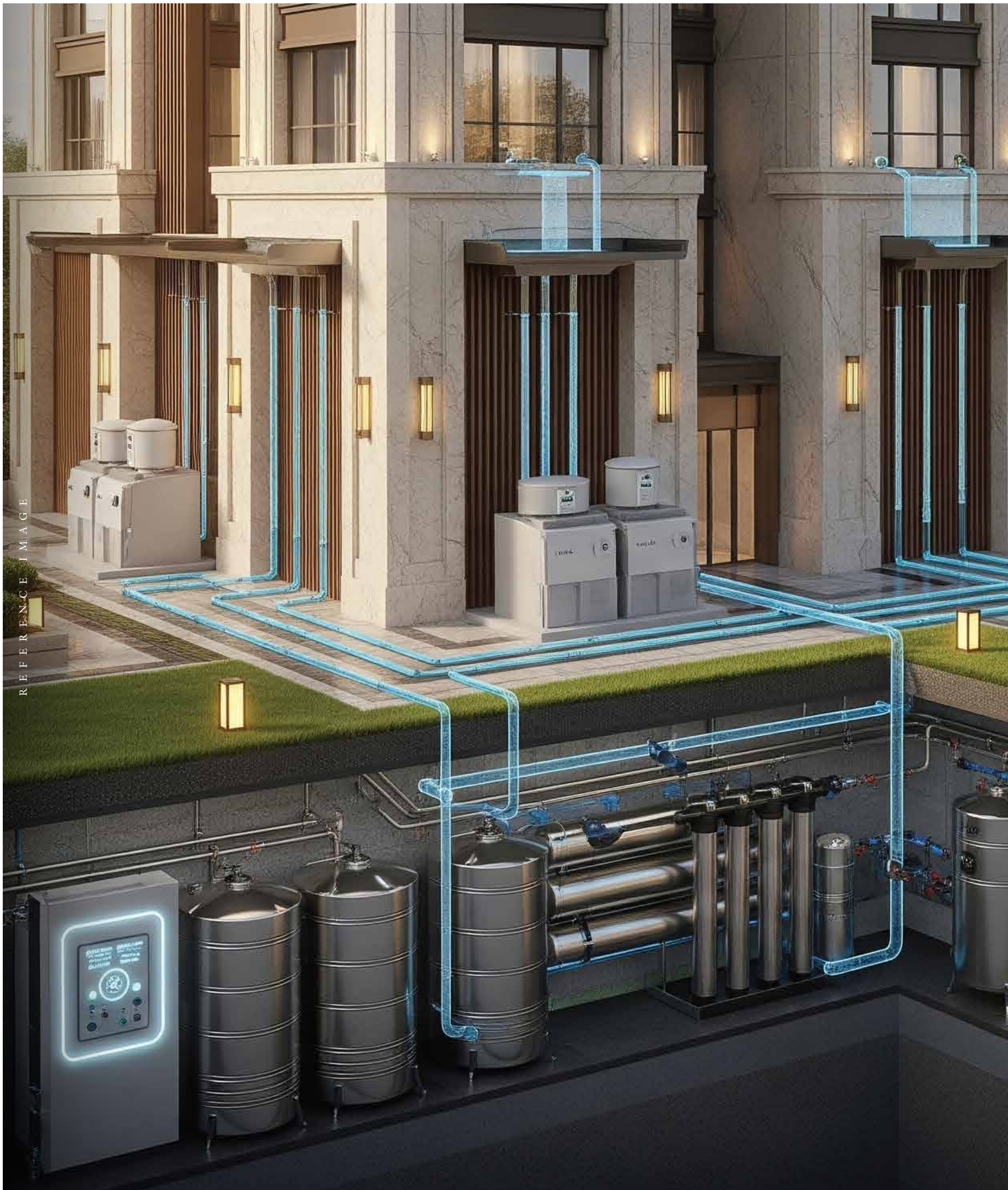
Club and Wellness

A World Within, For Every Mood

Every corner invites you to pause, connect, and savour the pleasures of being, from serene mornings in the yoga room to evenings spent by the pool.

- Pool Deck
- Indoor Cricket Pitch
- Badminton Court
- Open-Air Table Tennis Court
- Half Basketball Court
- Sandpit
- Hopscotch and Jump Rope for Kids
- Restaurant
- Indoor Sports Club





REFERENCE IMAGE

Sustainability and Ecosystems

A home that creates a lifestyle that lasts.

Sustainable systems work silently to save resources every day.



Specifications

Bedroom

Comfort Built Into Every Corner

Materials chosen for calm, quiet, and long-lasting comfort.



Flooring
Premium Vitrified / Porcelain Tiles



Ceiling
Oil Bond Distemper, Whitewash

Wall
Oil Bond Distemper



Doors
Hardwood Frame with
Laminated Finish Flush Door



External Doors & Windows
Aluminium Powder
Coated / UPVC with Glass



Air Conditioner
High Wall Split System AC

Specifications

Common Area

Shared Spaces Designed to Welcome You In

Finishes that look polished on day one and still feel inviting years later.



Flooring
Marake Flooring / Vitrified Tiles



Ceiling
Oil Bond Distemper, Whitewash

Wall
Oil Bond Distemper
and Whitewash



Main Doors
WPC / Hardwood Frame
With Laminated Flush Door



Air Conditioner
High Wall Split System AC

Specifications

Kitchen

A Kitchen Ready for Real Cooking

Built for everyday use, from morning rush to weekend experiments.
Modular setup with smart storage, including a hob, chimney, and graphite countertop.



Flooring
Marble Flooring / Vitrified Tiles



Wall
Oil Bond Distemper, Whitewash

Fixtures & Faucets
Modern Style CP Fittings /
Single Bowl Sink



Dado
Ceramic Tiles 600mm
Above Counter



Countertop
Stone

Specifications

Washroom

A Washroom That Works Smoothly Every Day

Practical materials, clean finishes, and fittings that hold up to daily routines.

Ceiling
Grid False Ceiling



Flooring
Anti-Skid Ceramic Tiles



Wall
Ceramic Tiles



Fittings & Fixtures
Modern Style CP Fittings / Single Bowl
Sink / W.C & Washbasin

Specifications

Basement

Cool, Quiet, Ready for Anything

A climate-ready basement that stays usable year-round.

Air Conditioner
High Wall Split System AC



Specifications

Balcony / Terrace / Electrical & Structure

Strength, Safety, and Open-Air Comfort

Outdoor spaces and structural elements are built to stay strong and weather-friendly.



Flooring
Anti Skid / Matt Finish
Ceramic Tiles



Railing
MS Railing with
Enamel Paint Finish

Terrace

Brick Bat Coba or Water
Proofing Treatment



Building Structure
Earthquake Resistant RCC Framed
Structure as per Sismic Zone

Wiring

Copper Electrical Wiring Throughout
In Concealed Conduit (ISI Marked)



Switches / Sockets
Modern Style ISI Marked
Switches & Sockets



ARTISTIC IMPRESSION



Master Plan

10.0M WIDE ROAD

10.0M WIDE ROAD

24.0M WIDE SECTOR

TYPE - B

TYPE - D





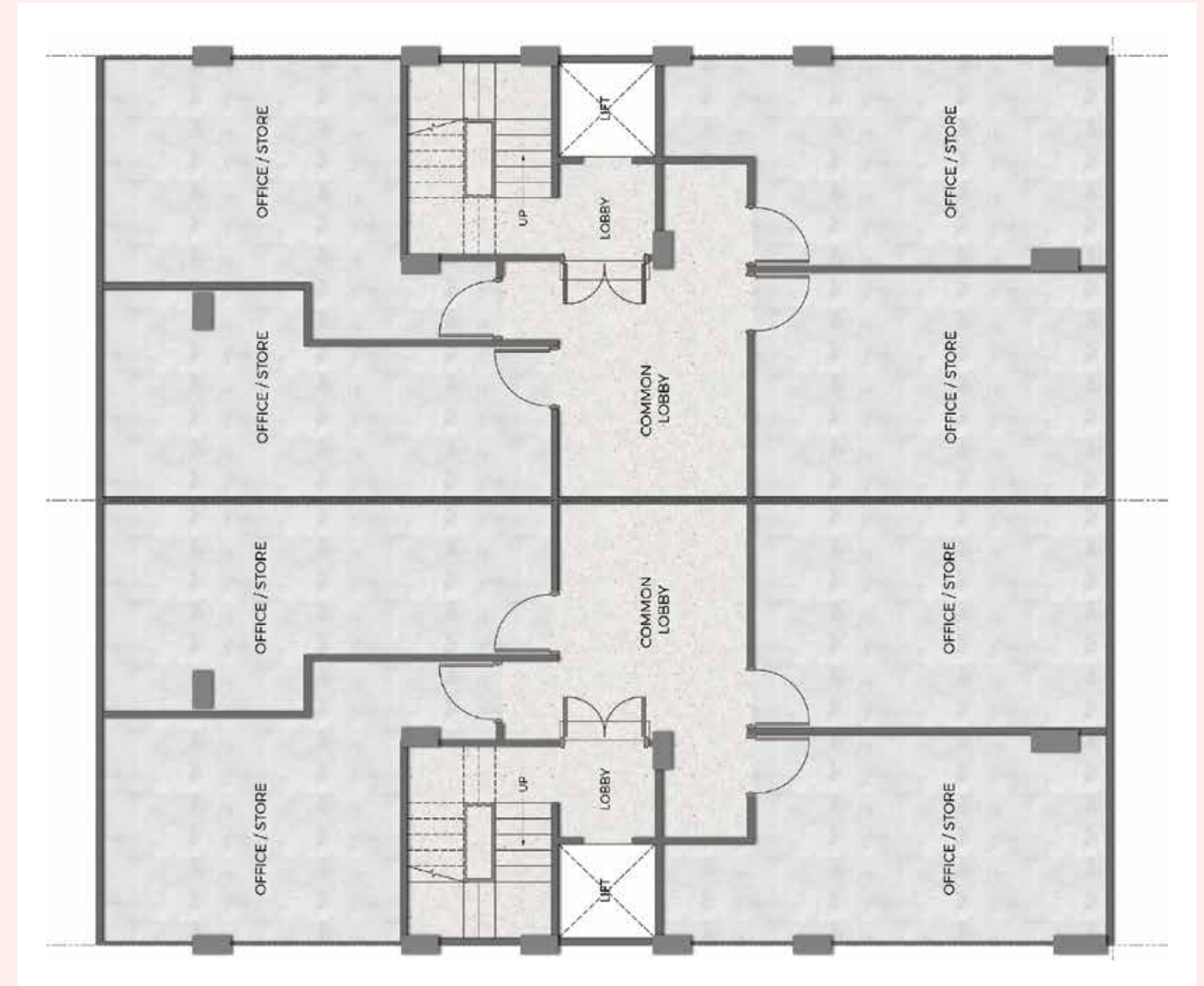
Master Plan

Floor Plan

PLOT TYPE-B

PLOT SIZE - 20.028M X 6.580M 131.784 SQ.M (157.614 SQ.YDS.)

BASEMENT LEVEL PLAN 3BEDROOM + 3TOILETS

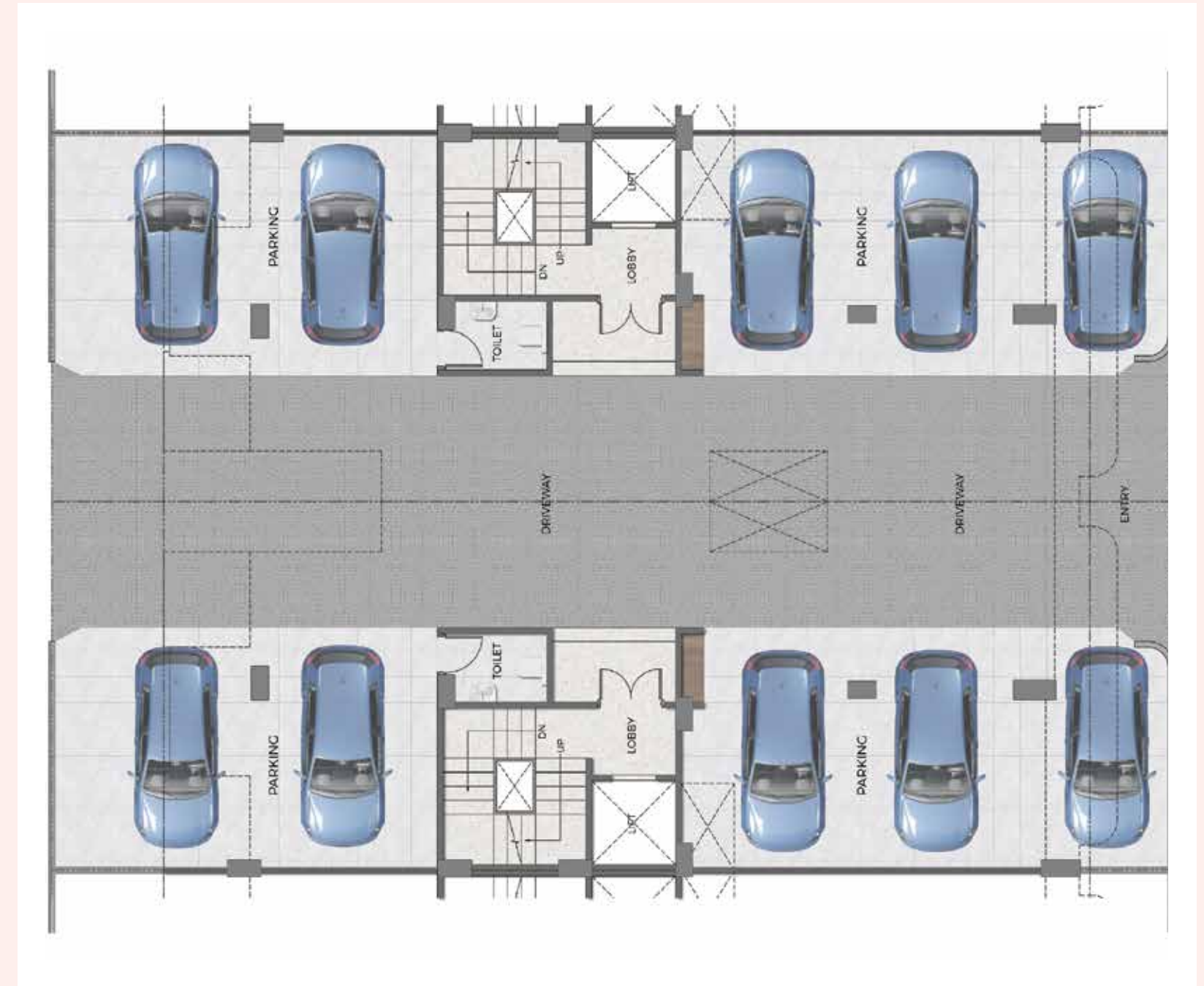


Floor Plan

PLOT TYPE-B

PLOT SIZE - 20.028M X 6.580M 131.784 SQ.M (157.614 SQ.YDS.)

STILT LEVEL PLAN 3BEDROOM + 3TOILETS

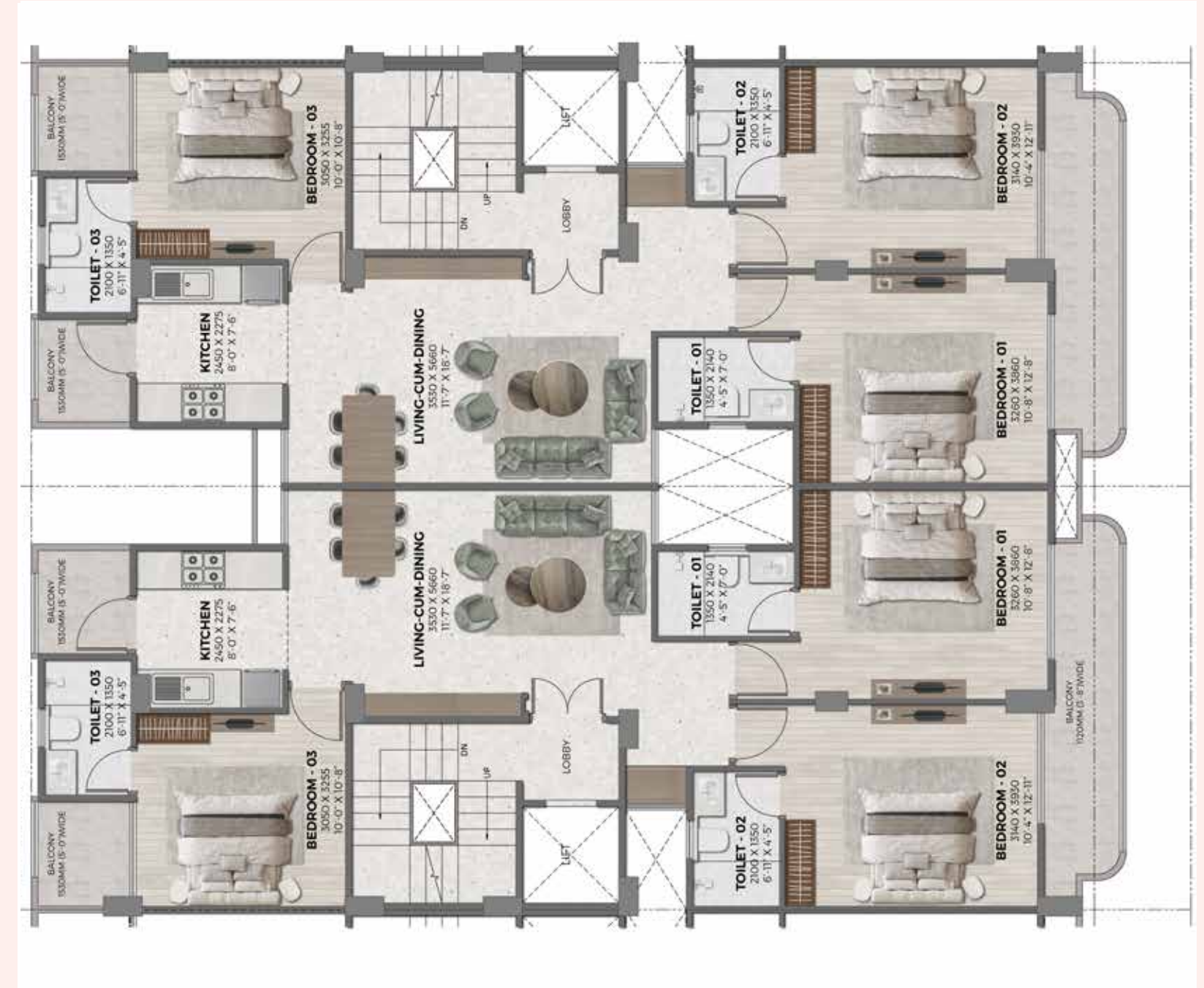


Floor Plan

PLOT TYPE-B

PLOT SIZE - 20.028M X 6.580M 131.784 SQ.M (157.614 SQ.YDS.)

TYPICAL FLOOR PLAN 3BEDROOMS + 3TOILETS

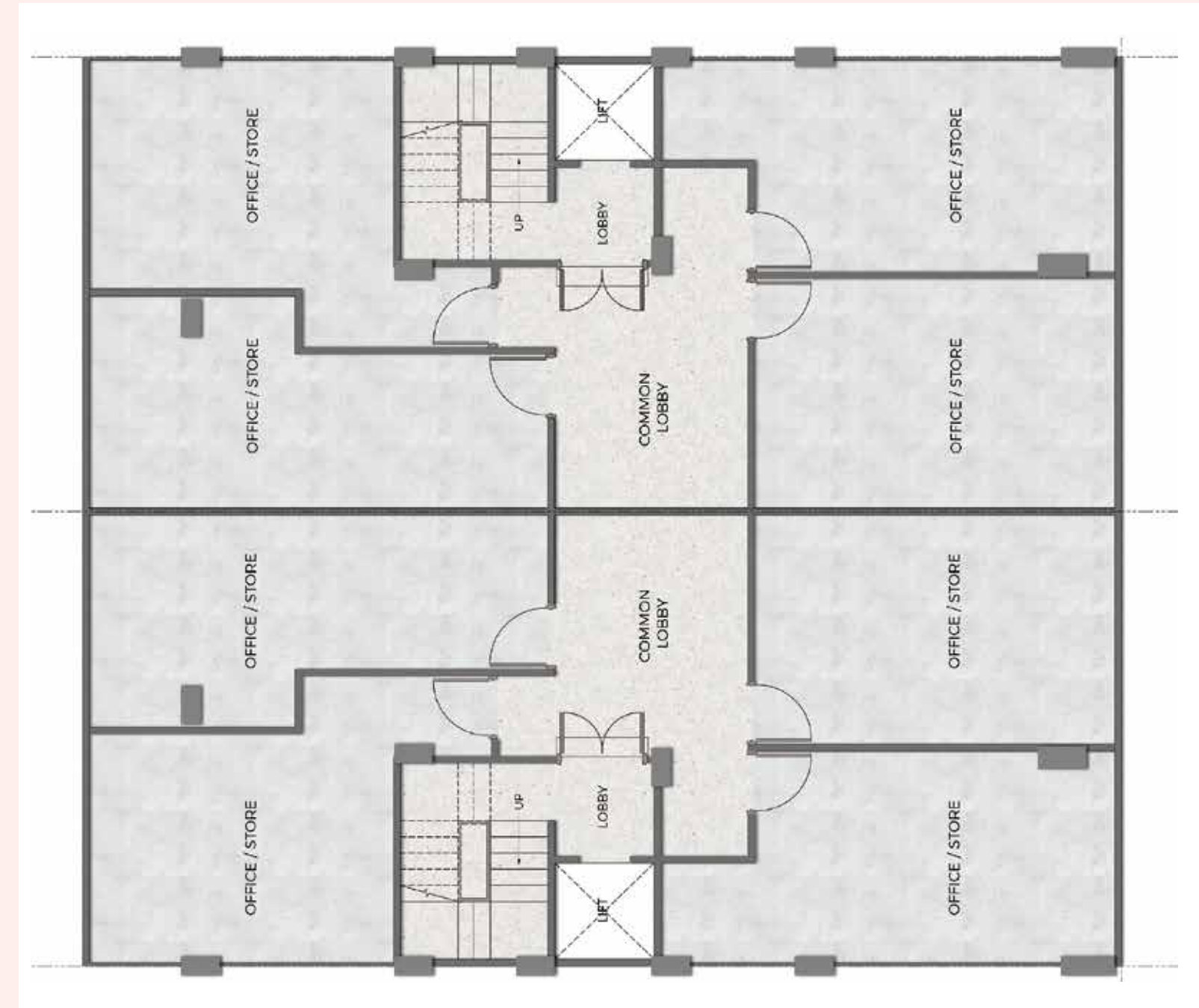


Floor Plan

PLOT TYPE-D

PLOT SIZE - 7.052M X 19.936M 140.589 SQ.M (168.144 SQ.YDS.)

BASEMENT LEVEL PLAN 3BEDROOM + 3TOILETS

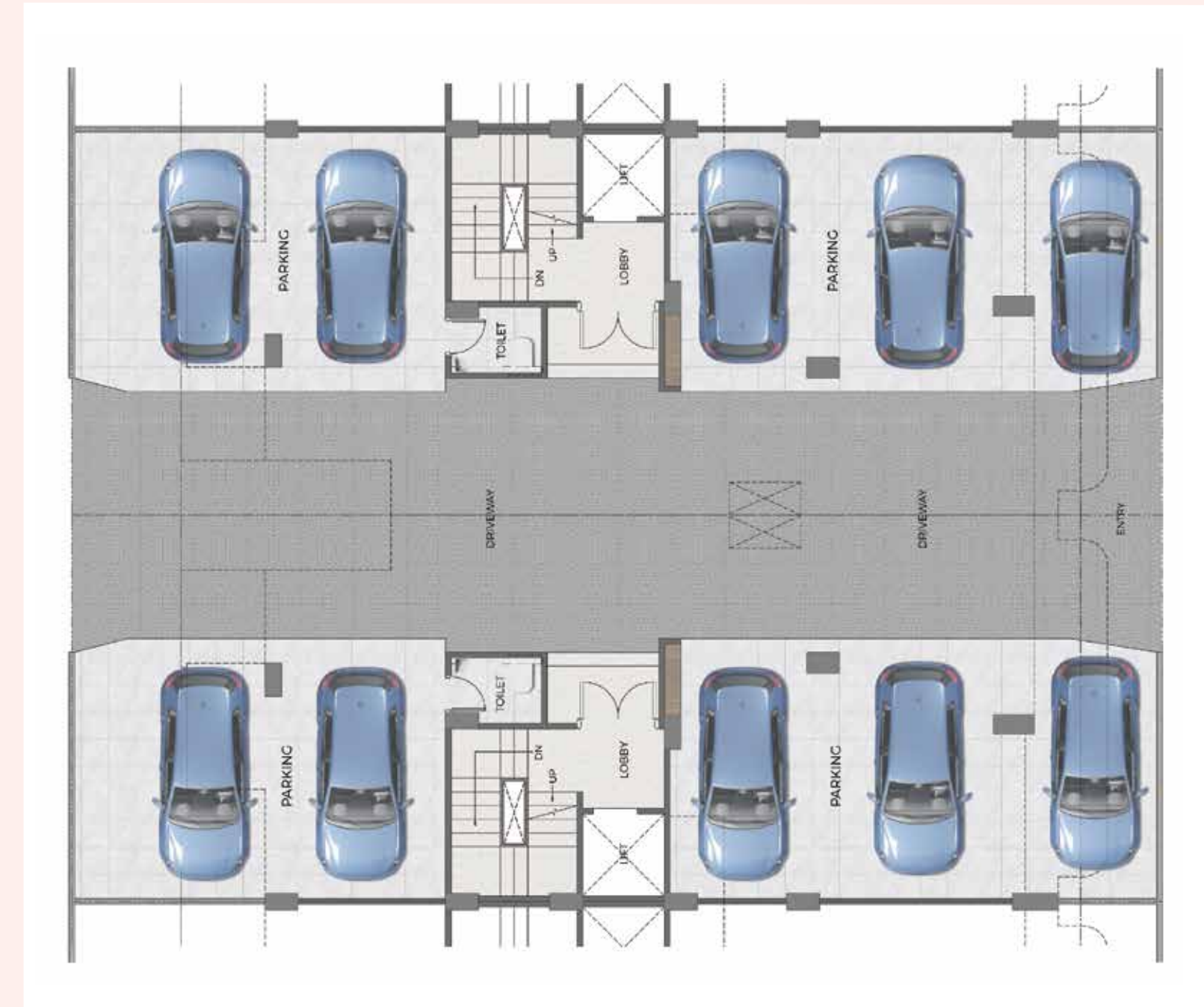


Floor Plan

PLOT TYPE-D

PLOT SIZE - 7.052M X 19.936M 140.589 SQ.M (168.144 SQ.YDS.)

STILT LEVEL PLAN
3BEDROOM + 3TOILETS



Club and Wellness Floor Plan



GANGA Valley Floors

Your Life. Your Masterpiece.

At Ganga Valley Floors, you don't just buy a home, you embrace a retreat, a view, and a lifestyle. Here, every sunrise over the Aravalis is a reminder that your dreams found the perfect address.

ARTISTIC IMPRESSION





GANGA

REALTY

Life is pure.TM

GANGA

Life | Experience | Indulgence

Ganga Realty is beyond brick and mortar spaces. We align ourselves to the vision of havens where life, and its purest aspects, blossom. We strive to deliver homes that offer more than physical value, complementing the ways of life, and offering new experiences to those who inhabit them.

Our commercial projects are planned to usher in prosperity for our customers and vibrant moments for the visitors. As we build on this vision, we choose strategic locations which not only elevate the present, but also safeguard the future. And, we craft lasting partnerships strengthened by transparency and quality. This is the Ganga Realty vision.