

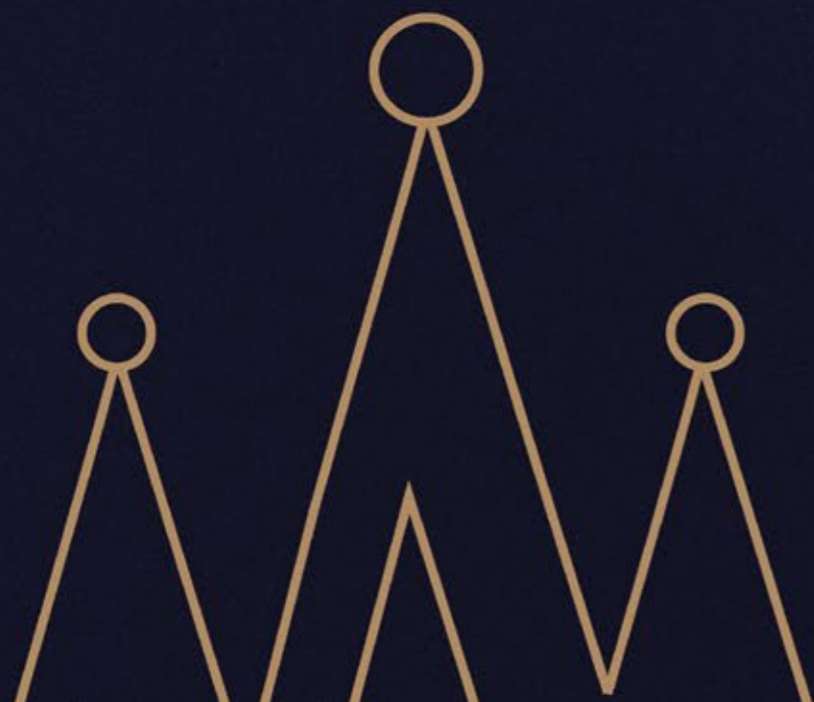
RC/REP/HARERA/GGM/687/419/2023/31, Dated: 02.02.2023
Promoter Name - Metro Education & Welfare Private Limited
www.haryanarera.gov.in



MEM
CROWN

ROYALTY, REDEFINED IN A SPACE

THAT FITS YOUR DISTINCTION





An Address Rising At A Thriving Location

*All distances mentioned are approximations only



ARTISTIC IMPRESSION



Enjoy The Dynamics Of A Class Apart Address



3 KMS*
FROM
IGI AIRPORT



5 KMS*
FROM
CYBER HUB



7 KMS*
FROM
DWARKA METRO



9 KMS*
FROM
VASANT KUNJ



0 KM*
FROM
DELHI

*Actual distance and travel time may vary as per driving conditions



Delve Into A Realm Of Exceptional Marvel And Wonder

Immerse yourself in the exquisite allure of high-rise 3 and 4 bedrooms adorned with opulence. These resplendent residences intertwine seamlessly with a flourishing infrastructure in close proximity. Prepare to immerse yourself in an experience that has long occupied the pinnacle of your aspirational desires, now artfully manifested in an enchanting realm of reality.





ARTISTIC IMPRESSION



A Space Blessed By Nature's Grandeur

The plush settings of our iconic clubhouse are sure to offer you cherished memories. Engage in a plethora of amenities and facilities and pave the way to a wholesome living.



Interiors That Are Sure To Inspire Wonder



Pamper your senses with a home that's adorned with superior interiors. Here's a space that perfectly syncs with your distinguished choices.



ARTISTIC IMPRESSION



Unwind In Rare
Hues Of Royalty



A Delightful Blend For Your Leisures



Enjoy amenities spread across
75,000 sq. ft. (6,967.728 sq.mtr.)
and make the merriest moments
with your favourite activities.



Site Plan

- LEGEND**
- | | |
|---|--|
| 1. RESIDENTIAL ENTRANCE | 25. FITNESS TRAIL |
| 2. TOWER DROP OFF & LOBBY | 26. ORGANIC FARMING |
| 3. CLUBHOUSE DROP OFF | 27. GARDEN OF FLOWERS |
| 4. CLUBHOUSE | 28. MIST GARDEN |
| 5. RAMP DOWN | 29. BAMBOO FOREST |
| 6. RAMP UP | 30. POOL SIDE CAFE |
| 7. KIDS POOL | 31. MINIATURE LAGOON |
| 8. SWIMMING POOL | 32. EXOTIC LANDSCAPES WITH SEASONAL THEMES |
| 9. WATER SPOUTS | 33. PETS PARK |
| 10. KIDS PLAY AREA | 34. BUTTERFLY VALLEY & ORNAMENTAL PARK |
| 11. AMPHITHEATER
(CONNECTING LANDSCAPE & CLUBHOUSE ROOF) | 35. GREEN ARCHES |
| 12. EVENT LAWN | 36. RAIN GARDEN |
| 13. YOGA & MEDITATION LAWN | 37. BARBEQUE AREA |
| 14. READING ZONE | 38. BONFIRE |
| 15. ZEN GARDEN | 39. OUTDOOR MUSIC |
| 16. FRENCH GARDEN | 40. TENSILE SHADED SEATING AREA |
| 17. CRICKET NETS | 41. GOLF PUTTING GREENS |
| 18. WATER BODY | 42. CLIMBING WALL |
| 19. GAZEBO | 43. TEMPLE / MEDITATION HALL |
| 20. BADMINTON COURTS | |
| 21. OUTDOOR GYM | |
| 22. SENIOR CITIZEN PARK | |
| 23. LAWN TENNIS COURT | |
| 24. BASKETBALL COURT | |

- | | |
|--|--------------|
| | 4.5 BHK + SQ |
| | 4 BHK + SQ |
| | 3.5 BHK + SQ |
| | 3.5 BHK |
| | 3 BHK |



LEASE LAND FOR LAKE

3 BHK (1605 Sq. Ft.)



3 BHK WITH DECK (1665 SQ.FT.)



"PLAN NOT TO SCALE DISCLAIMER:
 Layout can be mirrored as per specific location.
 The images are for illustrative and indicative purposes only.
 Furniture layout and furnishings are for illustrative and indicative purposes only."

"PLAN NOT TO SCALE DISCLAIMER:
 Layout can be mirrored as per specific location.
 The images are for illustrative and indicative purposes only.
 Furniture layout and furnishings are for illustrative and indicative purposes only."

3 BHK + STUDY (1825 SQ.FT.)



"PLAN NOT TO SCALE DISCLAIMER:
 Layout can be mirrored as per specific location.
 The images are for illustrative and indicative purposes only.
 Furniture layout and furnishings are for illustrative and indicative purposes only."

3 BHK + STUDY WITH DECK (1895 SQ.FT.)



"PLAN NOT TO SCALE DISCLAIMER:
 Layout can be mirrored as per specific location.
 The images are for illustrative and indicative purposes only.
 Furniture layout and furnishings are for illustrative and indicative purposes only."

3BHK + STUDY + UTILITY (2080 SQ. FT.)



"PLAN NOT TO SCALE DISCLAIMER:
 Layout can be mirrored as per specific location.
 The images are for illustrative and indicative purposes only.
 Furniture layout and furnishings are for illustrative and indicative purposes only."

3BHK + STUDY + UTILITY WITH DECK (2170 SQ.FT.)



"PLAN NOT TO SCALE DISCLAIMER:
 Layout can be mirrored as per specific location.
 The images are for illustrative and indicative purposes only.
 Furniture layout and furnishings are for illustrative and indicative purposes only."

4 BHK + UTILITY (2305 SQ.FT)



“PLAN NOT TO SCALE DISCLAIMER:
 Layout can be mirrored as per specific location.
 The images are for illustrative and indicative purposes only.
 Furniture layout and furnishings are for illustrative and indicative purposes only.”

4BHK + UTILITY WITH DECK (2400 SQ.FT.)



“PLAN NOT TO SCALE DISCLAIMER:
 Layout can be mirrored as per specific location.
 The images are for illustrative and indicative purposes only.
 Furniture layout and furnishings are for illustrative and indicative purposes only.”

4BHK + STUDY + UTILITY (2570 SQ.FT.)



"PLAN NOT TO SCALE DISCLAIMER:

Layout can be mirrored as per specific location.

The images are for illustrative and indicative purposes only.

Furniture layout and furnishings are for illustrative and indicative purposes only."

4BHK + STUDY+ UTILITY WITH DECK (2670 SQ.FT.)



"PLAN NOT TO SCALE DISCLAIMER:

Layout can be mirrored as per specific location.

The images are for illustrative and indicative purposes only.

Furniture layout and furnishings are for illustrative and indicative purposes only."

M3M CROWN TOWER 1 & 2

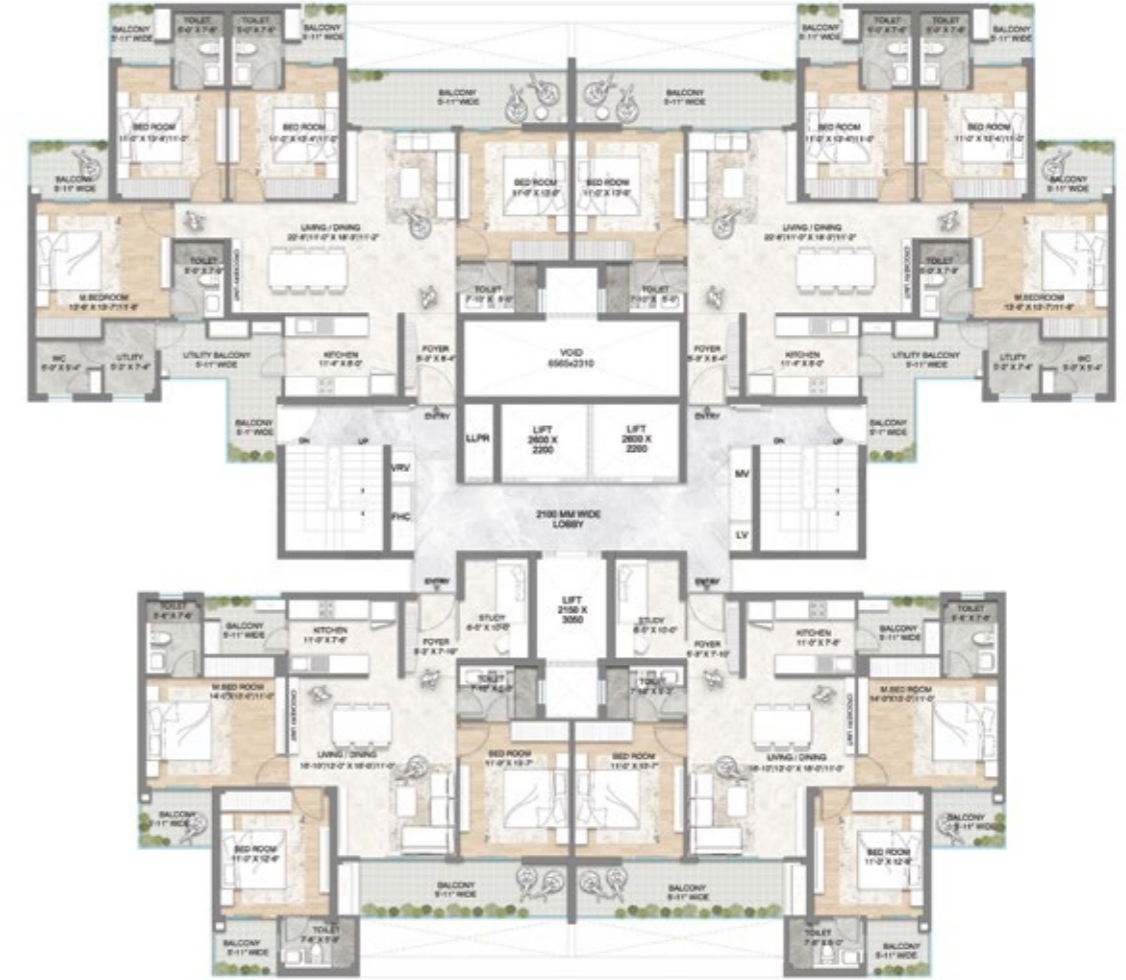
4BHK



3BHK

M3M CROWN TOWER 13

4BHK

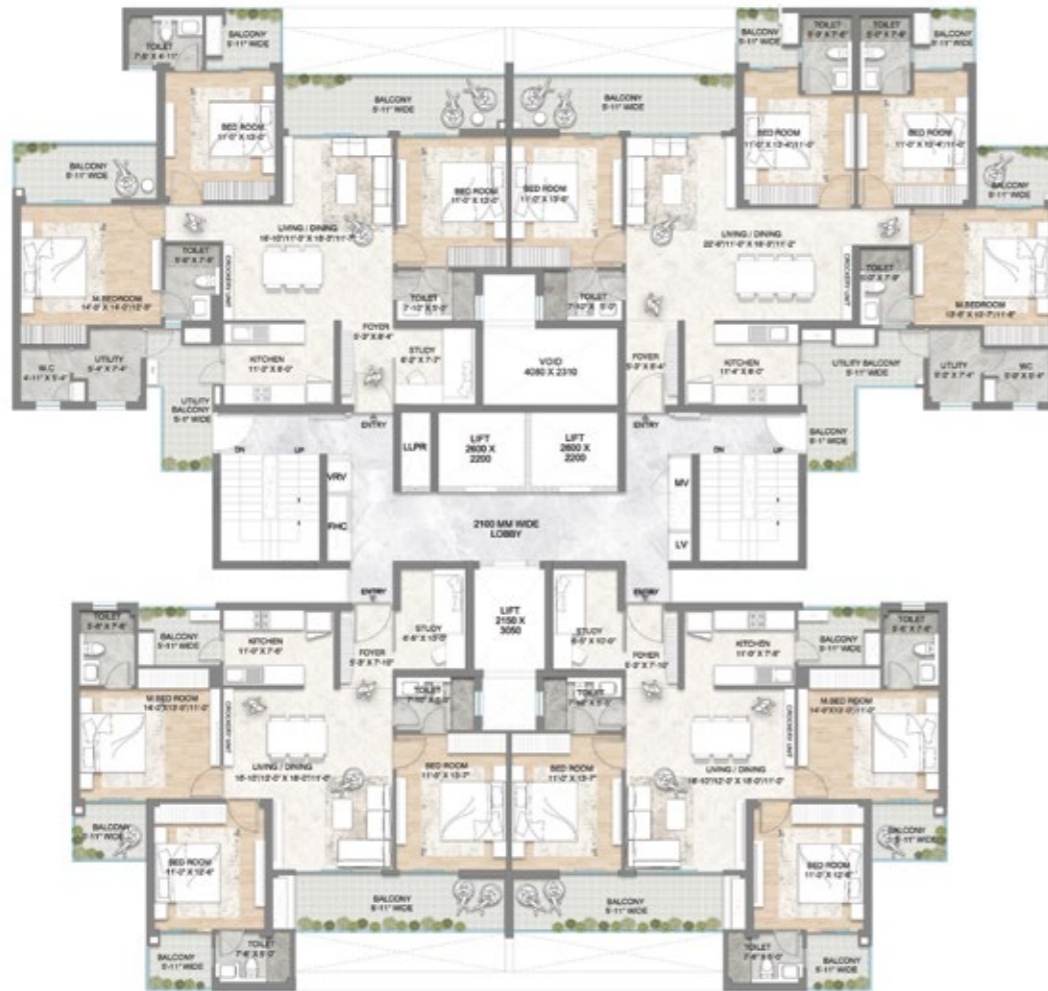


3BHK

M3M CROWN TOWER 6 & 8

3BHK

4BHK



3BHK

M3M CROWN TOWER 9 & 11

3BHK

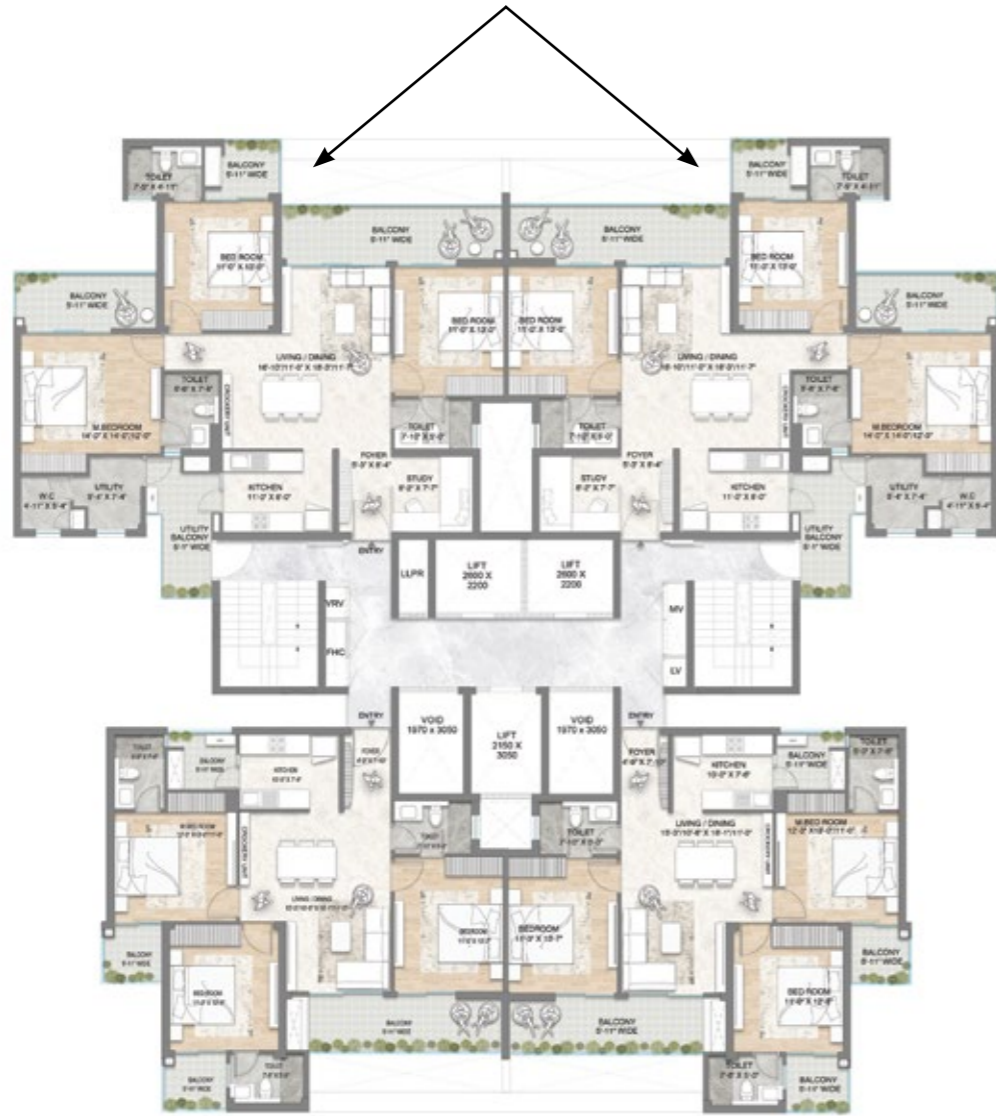
4BHK



3BHK

M3M CROWN TOWER 7 & 10

3BHK

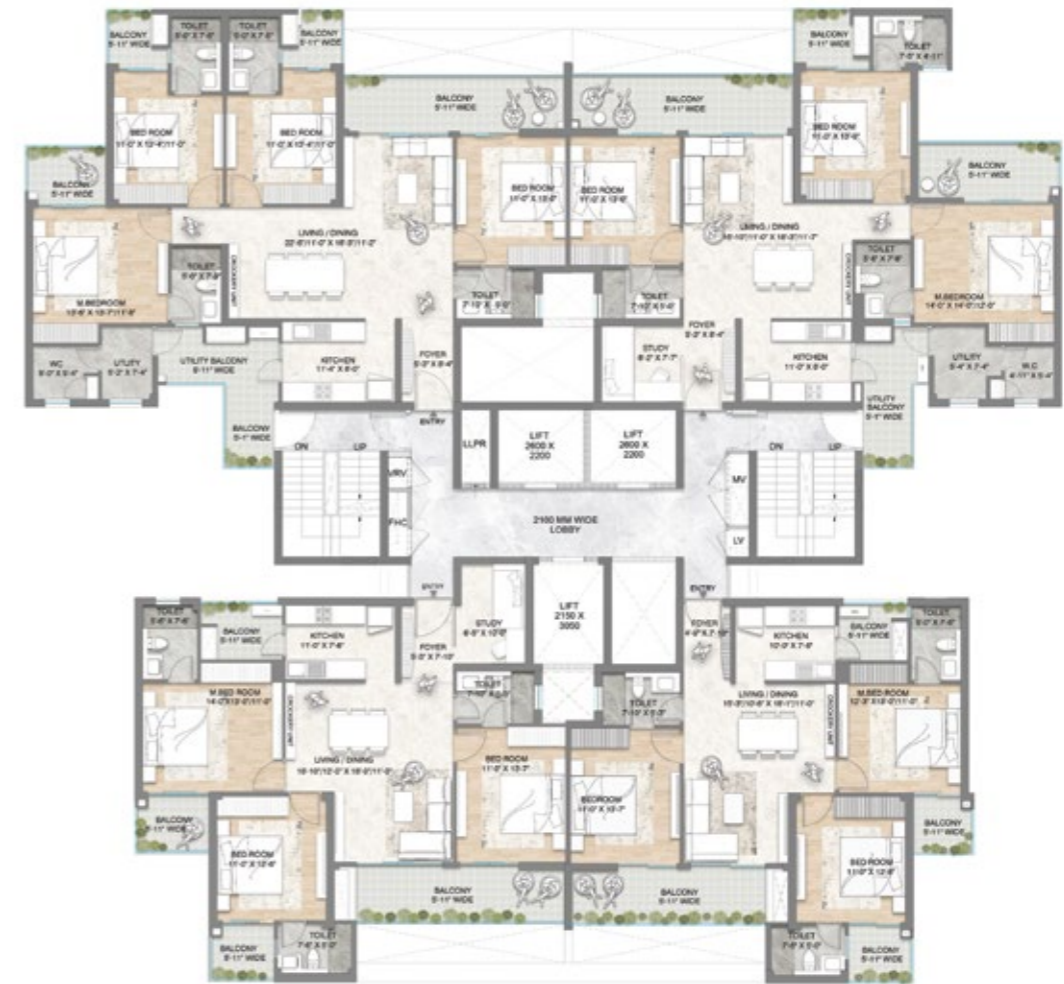


3BHK

M3M CROWN TOWER 12 & 14

4BHK

3BHK



3BHK





Metro Education & Welfare Private Limited
(CIN- U70100HR2010PTC086524)

Registered Office:

41st Floor, Tower-1, M3M International Financial Center, Sector-66,
Gurugram-122101, Haryana

Sales Gallery:



M3M Experia, Sector 113, Dwarka Expressway,
Smart City Delhi Airport, Gurugram

CRM Lounge:

10th Floor, M3M Urbana Business Park, Tower A, Sector 67, Golf Course Road (Extn.),
Gurugram 122101, Haryana, India

Project Site:

M3M Crown Situated at Village Chauma, Sector 111, Gurugram 122017,
Haryana, India

 feedback@M3MIndia.com |  www.M3MIndia.com

Disclaimer: The contents, information, images and visuals or sketches including landscaping in this brochure are only an architect's impression, representative images or artistic renderings for general informational purposes only. Nothing contained in this brochure intends to constitute a legal offer and does not form part of any legally binding agreement and/or commitment of any nature. Every endeavour has been made to keep the information updated. However, Promoter Company make no representations or warranties of any kind, express or implied, about the completeness, accuracy, reliability, suitability or availability with respect to this Brochure or the information, specification, or related graphics contained in this Brochure for any purpose. Recipient(s)/viewer(s) accessing this Brochure are advised to exercise their discretion in relying on the information shown/provided and are requested to verify all the details, including area, amenities, services, terms of sales and payments and other relevant terms independently with the Promoter Company, have thorough understanding of the same and take appropriate advice prior to concluding any decision for buying any Unit(s) in the Project. "M3M Crown" is a standalone Commercial Project situated at Sector -111, Gurugram, Manesar Urban Complex, District Gurugram (Haryana) on the land admeasuring 64724.4 sq. mtr. or 15.9 Acres, being developed by M/s Metro Education & Welfare Private Limited (fully owned subsidiary of M/s M3M India Private Limited), as Mixed Land Use under TOD Policy-2016, approval for which was granted by DTCP vide Memo No. 213 of 2022, dated 18.11.2022. The Project is duly registered with Haryana Real Estate Regulatory Authority vide Regn. No. RC/REP/HARERA/GGM /687/419/2023/31, dated 02.02.2023. The use of word 'M3M' shall in no manner be construed or interpreted as M3M India Pvt. Ltd. being the Promoter and / or Developer of the Project. Dispute with regard to the interpretation of information will be subject to the exclusive jurisdiction of District Courts at Gurugram and Hon'ble High Court of Punjab & Haryana at Chandigarh, India. 1 Hect. = 2.471 Acres, 1 Acre = 4840 sq. yds. or 4046.86 sq. mtrs., 1 sq. mtr. = 10.764 sq.ft